



High Performance PPRC Piping for a Leakproof Future.



FIT & FORGET

ABOUT US

Established in 1998, Parthiv Group has built a strong legacy in the plastic industry through innovation, precision, and quality craftsmanship. Expanding this legacy, Parthiv Poly-Extrusions Pvt. Ltd., a flagship venture of the group, specializes in manufacturing PPRC Aqua Pipes & Fittings and PPRC Pneumatic Pipes & Fittings engineered to deliver unmatched strength, performance, and reliability for both industrial and domestic applications.

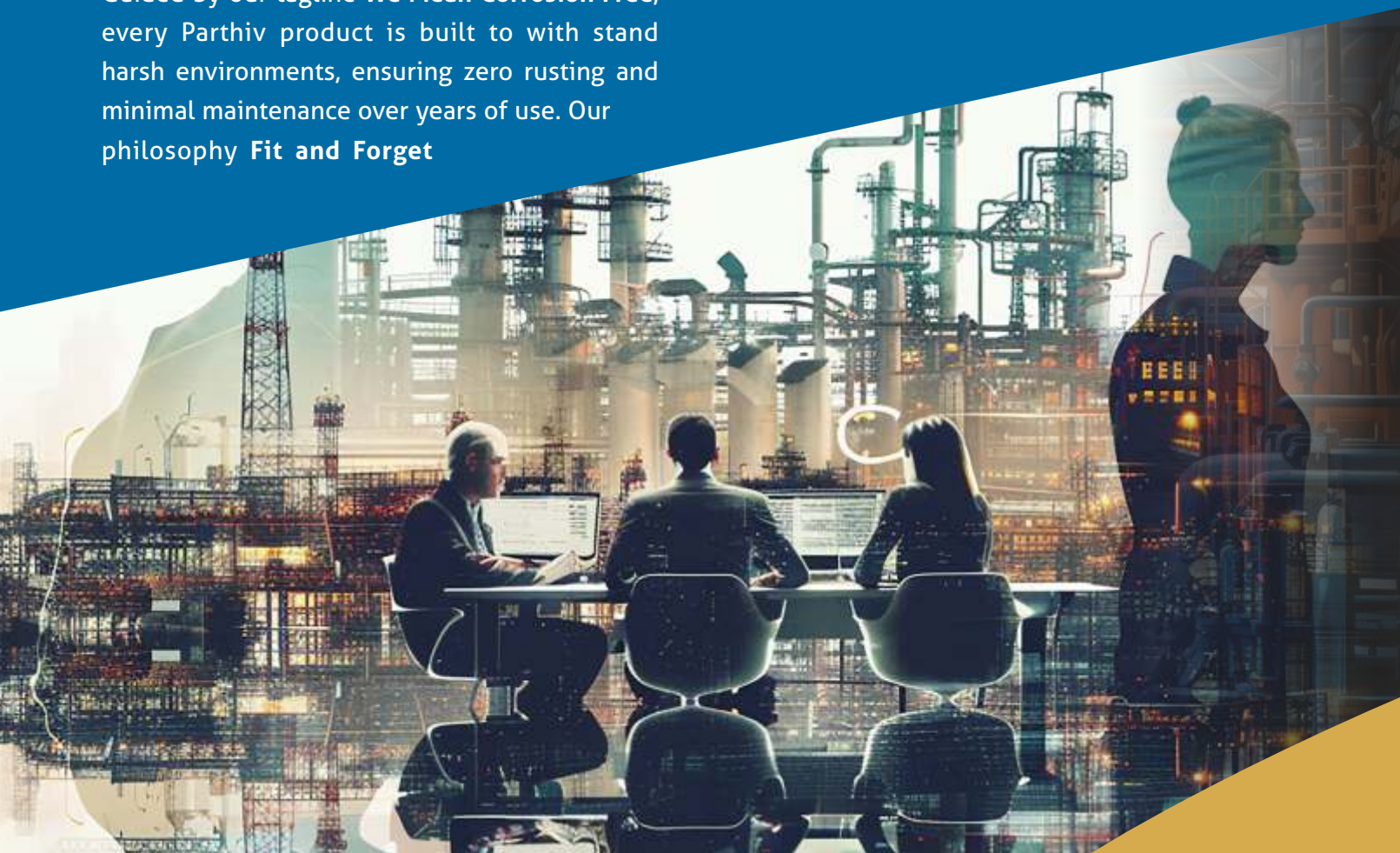
Our state of the art manufacturing facility, spread across 1,00,000 sq. ft., is equipped with advanced extrusion and molding technology that ensures consistency, durability, and precision in every product. Each product under the Parthiv brand is designed to offer leak-free performance, high pressure resistance, and long-lasting service life, making it the preferred choice for air, water, and fluid transportation systems. We manufacture and supply pipes in a wide range of sizes from 20 mm to 315 mm to meet the varied requirements of different applications.

Guided by our tagline **We Mean Corrosion Free**, every Parthiv product is built to withstand harsh environments, ensuring zero rusting and minimal maintenance over years of use. Our philosophy **Fit and Forget**

reflects our commitment to providing reliable, worry free piping solutions that customers can install with complete confidence and peace of mind.

Along with our PPRC range, Parthiv also offers a diverse portfolio including HDPE Tanks, Scrubbers, Reaction Vessels, Ball Valves, Foot Valves, NRV Valves, Butterfly Valves, Diaphragm Valves, and other precision engineered fittings, serving multiple industrial sectors with excellence.

Driven by quality, innovation, and customer satisfaction, Parthiv adheres to international manufacturing standards and strict quality control systems. With over two decades of experience, we continue to strengthen our reputation as a trusted brand in polymer based piping systems delivering solutions that truly last a lifetime.



QUALITY

Parthiv offers high-performance PPR & PPRC pipes engineered for durability, zero leakage, and hygienic flow. Our fusion-welded system creates strong, single-piece joints ideal for hot and cold water, compressed air, gas lines, HVAC, and industrial applications. Made from high-grade, corrosion-resistant material, the pipes ensure excellent pressure handling, UV stability, and a lifespan of 50+ years. With smooth inner walls, reduced heat loss, and food-grade safety, Parthiv delivers reliable performance for homes, hotels, hospitals, industries, and pneumatic systems. Choose Parthiv for long-lasting strength, safety, and total peace of mind.

VISION

To position Parthiv Poly-Extrusion as a global leader in engineered plastic solutions known for innovation, sustainability, and consistent quality that helps build a safer and cleaner industrial future.

MISSION

- To continuously innovate and create advanced polymer-based industrial solutions.
- To deliver high-quality products that consistently exceed customer expectations.
- To follow eco-friendly manufacturing practices that protect and support the environment.
- To empower our team and build a culture of growth, responsibility, and customer focused service.



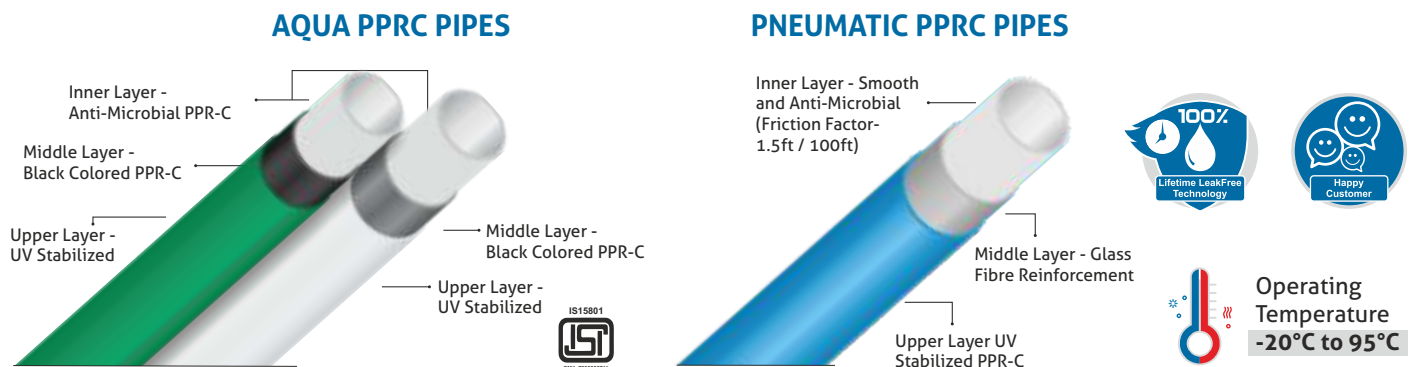
**Built on Trust.
Flowing with Excellence.**

PARTHIV AQUA & PNEUMATIC PIPING SYSTEMS

What Are PPRC Pipes?

PPRC (Polypropylene Random Copolymer) pipes are advanced thermoplastic piping systems designed for long-lasting strength, hygiene, and leak-proof performance. Made from high-grade copolymer material, they offer excellent resistance to heat, pressure, corrosion, and chemicals. Their fusion-welded joints form a single, solid pipeline—ensuring zero leakage and extended service life.

Built with **3-layer protection**, these pipes provide enhanced durability, better temperature stability, and superior performance in demanding applications.



Where Can PPRC Pipes Be Used?

PPRC pipes are ideal for hot and cold water supply, residential and commercial plumbing, and industrial liquid transport. They are widely used for compressed air, gas lines, HVAC, and chilled water systems. Their hygienic and durable design makes them suitable for hospitals, hotels, laboratories, and various chemical or process industries.

FEATURES



Wide Temperature Resistance (-20°C to 95°C)

PPRC pipes can withstand extreme temperatures from chilled water at -20°C to hot water systems up to 95°C without losing strength or performance. Ideal for HVAC, hot & cold water supply, and industrial heating or cooling applications.



Zero-Leak Fusion Joints

Heat-fusion welding creates a single-piece, monolithic joint with no weak points. This guarantees a 100% leak-proof pipeline. It ensures long-term reliability even under continuous pressure and temperature variations.



Hygienic & Food-Grade Material

Non-toxic, bacteria-resistant polymer ensures safe drinking water flow. Maintains water purity from source to outlet. Ideal for environments requiring strict hygiene standards like hospitals and laboratories.



Corrosion & Chemical Resistant

They do not rust, scale, or react with chemicals, ensuring long-lasting performance. Perfect for harsh water conditions and industrial fluid transport.



High Pressure Durability

Built to handle high-pressure systems without deformation or cracks. Suitable for residential, commercial, and industrial pipelines. Its robust structure provides stable performance in demanding and continuous flow conditions.



Low Thermal Conductivity

Prevents heat loss in hot water lines and minimizes condensation in cold water lines. Increases energy efficiency in plumbing systems. This thermal insulation property reduces energy costs and supports eco-friendly operations.

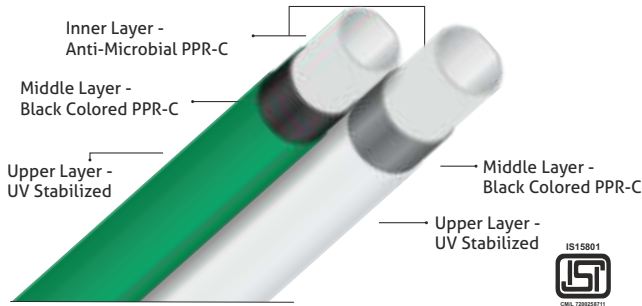
PARTHIV AQUA & PNEUMATIC PIPING SYSTEMS

What Are PPRC Pipes?

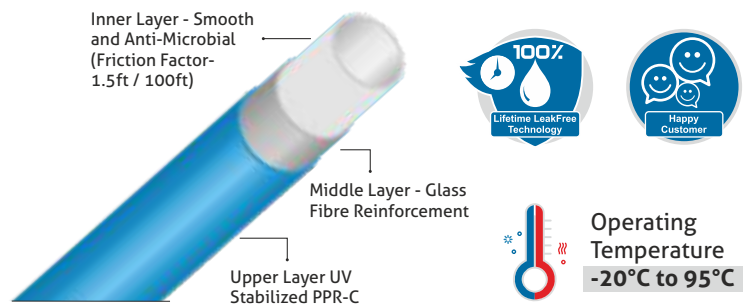
PPRC (Polypropylene Random Copolymer) pipes are advanced thermoplastic piping systems designed for long-lasting strength, hygiene, and leak-proof performance. Made from high-grade copolymer material, they offer excellent resistance to heat, pressure, corrosion and chemicals. Their

fusion-welded joints form a single, solid pipeline ensuring zero leakage and extended service life. Built with **3-layer protection**, these pipes provide enhanced durability, better temperature stability, and superior performance in demanding applications.

AQUA PPRC PIPES



PNEUMATIC PPRC PIPES



Where Can PPRC Pipes Be Used?

PPRC pipes are ideal for hot and cold water supply, residential and commercial plumbing, and industrial liquid transport. They are widely used for compressed air, gas lines, HVAC, and chilled water systems. Their hygienic and durable design makes them suitable for hospitals, hotels, laboratories, and various chemical or process industries.

FEATURES



Wide Temperature Resistance (-20°C to 95°C)

PPRC pipes can withstand extreme temperatures from chilled water at -20°C to hot water systems up to 95°C without losing strength or performance. Ideal for HVAC, hot & cold water supply, and industrial heating or cooling applications.



Zero-Leak Fusion Joints

Heat-fusion welding creates a single-piece, monolithic joint with no weak points. This guarantees a 100% leak-proof pipeline. It ensures long-term reliability even under continuous pressure and temperature variations.



Hygienic & Food-Grade Material

Non-toxic, bacteria-resistant polymer ensures safe drinking water flow. Maintains water purity from source to outlet. Ideal for environments requiring strict hygiene standards like hospitals and laboratories.



Corrosion & Chemical Resistant

They do not rust, scale, or react with chemicals, ensuring long-lasting performance. Perfect for harsh water conditions and industrial fluid transport.



High Pressure Durability

Built to handle high-pressure systems without deformation or cracks. Suitable for residential, commercial & industrial pipelines. Its robust structure provides stable performance in demanding and continuous flow conditions.



Low Thermal Conductivity

Prevents heat loss in hot water lines & minimizes condensation in cold water lines. Increases energy efficiency in plumbing systems. This thermal insulation property reduces energy costs & supports eco-friendly operations.

PARTHIV PPH PIPES



PPH - Polypropylene Homopolymer shows a high mechanical strength.

- High impact strength, but a low notched impact strength.
- PP Resists stress cracking and it is easy to weld.
- High thermal and stress, crack resistance.
- Non toxic, Food grade.
- Excellent chemical resistance the working.
- Temperature ranges between +50C and 100C.

Manufacturing Range : 20 mm OD to 315 mm
OD Standards : As pr DIN - 8077/78
Pressure Rating : PN 2.5 to PN 10

HDPE TANK

1 KL to 100 KL



PARTHIV AQUA PPRC PIPES



AQUA PPRC PIPE SDR 11/ S 5/ PN 10



Pipe		Diameter	Wall Thickness	Internal Diameter	Water Content
Dimension	Packing Unit	d(mm)	S(mm)	di(mm)	litre/mtr
20mm	240m	20	1.9	16.2	0.206
25mm	180m	25	2.3	20.4	0.327
32mm	120m	32	2.9	26.2	0.539
40mm	75m	40	3.7	32.6	0.834
50mm	45m	50	4.6	40.8	1.307
63mm	30m	63	5.8	51.4	2.074
75mm	21m	75	6.8	61.4	2.959
90mm	15m	90	8.2	73.6	4.252
110mm	12m	110	10.0	90.0	6.359
125mm	9m	125	11.4	102.2	8.199
160mm	6m	160	14.6	130.8	13.430
200mm	3m	200	18.2	163.6	21.010
250mm	3m	250	22.7	204.6	32.861
315mm	3m	315	28.6	257.8	52.172
355mm	3m	355	32.2	290.6	66.292
400mm	3m	400	36.3	327.4	84.145

AQUA PPRC PIPE SDR 7.4/ S 3.2/ PN 16



Pipe		Diameter	Wall Thickness	Internal Diameter	Water Content
Dimension	Packing Unit	d(mm)	S(mm)	di(mm)	litre/mtr
16mm	300m	16	2.2	11.6	0.106
20mm	240m	20	2.8	14.4	0.163
25mm	180m	25	3.5	18.0	0.254
32mm	120m	32	4.4	23.2	0.423
40mm	75m	40	5.5	29.0	0.660
50mm	45m	50	6.9	36.2	1.029
63mm	30m	63	8.6	45.8	1.647
75mm	21m	75	10.3	54.4	2.323
90mm	15m	90	12.3	65.4	3.358
110mm	9m	110	15.1	79.8	4.999
125mm	9m	125	17.1	90.8	6.472
160mm	6m	160	21.9	116.2	10.599
200mm	3m	200	27.4	145.2	16.550
250mm	3m	250	34.2	181.6	25.888
315mm	3m	315	43.4	228.2	40.879
355mm	3m	355	49.0	257	51.848

AQUA PPRC PIPE SDR 6/ S 2.5 / PN 20



Pipe		Diameter	Wall Thickness	Internal Diameter	Water Content
Dimension	Packing Unit	d(mm)	S(mm)	di(mm)	litre/mtr
16mm	240m	16	2.7	10.6	0.088
20mm	210m	20	3.4	13.2	0.137
25mm	150m	25	4.2	16.6	0.216
32mm	105m	32	5.4	21.2	0.353
40mm	60m	40	6.7	26.6	0.555
50mm	36m	50	8.3	33.4	0.876
63mm	24m	63	10.5	42.0	1.385
75mm	21m	75	12.5	50.0	1.963
90mm	12m	90	15.0	60.0	2.826
110mm	9m	110	18.3	73.4	4.229
125mm	6m	125	20.8	83.4	5.460
160mm	3m	160	26.6	106.8	8.954

AQUA PPRC PIPE SDR 17.6/ S 8.3 / PN 6



Pipe		Diameter	Wall Thickness	Internal Diameter	Water Content
Dimension	Packing Unit	d(mm)	S(mm)	di(mm)	litre/mtr
63mm	30m	63	3.6	55.8	2.444
75mm	21m	75	4.3	66.4	3.461
90mm	15m	90	5.1	79.8	4.999
110mm	12m	110	6.3	97.4	7.447
125mm	9m	125	7.1	110.8	9.637
160mm	6m	160	9.1	141.8	15.784
200mm	3m	200	11.4	177.2	24.649
250mm	3m	250	14.2	221.6	38.549
315mm	3m	315	17.9	279.2	61.193
355mm	3m	355	20.1	314.8	77.793
400mm	3m	400	22.7	354.6	98.707

PERMISSIBLE WORKING PRESSURE

The below table list is the allowable working pressure for pipes with different pressure class under specific temperature and work life Under normal work pressure & conditions, the life of Parthiv PPRC Piping system is guaranteed to be 50 years at least.

Temperature in C	Years of Service	Allowable working pressure, in bar for			
		PN-6 (SDR 17.6)	PN-10 (SDR 11)	PN-16 (SDR 7.4)	PN-20 (SDR 6)
10°C	1	10.0	17.6	27.8	35.0
	5	9.7	16.6	26.4	33.2
	10	9.4	16.1	25.5	32.1
	25	9.1	15.6	24.7	31.1
	50	8.9	15.2	24.0	30.3
	100	9.0	14.8	23.4	29.5
20°C	1	9.0	15.0	23.8	30.0
	5	8.5	14.1	22.3	28.1
	10	8.2	13.7	21.7	27.3
	25	8.0	13.3	21.1	26.5
	50	7.8	12.9	20.4	25.7
	100	7.5	12.5	19.8	24.9
30°C	1	7.7	12.8	20.2	25.5
	5	7.2	12.0	19.0	23.9
	10	7.0	11.6	18.3	23.1
	25	6.7	11.2	17.7	22.3
	50	6.6	10.9	17.3	21.3
	100	6.4	10.6	16.9	21.2
40°C	1	6.5	10.8	17.1	21.5
	5	6.1	10.1	16.0	20.2
	10	5.9	9.8	15.6	19.6
	25	5.7	9.4	15.0	18.8
	50	5.5	9.2	14.5	18.3
	100	5.4	8.9	14.1	17.8

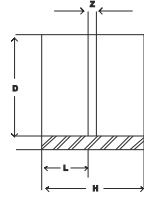
Temperature in C	Years of Service	Allowable working pressure, in bar for				
		PN-6 (SDR 17.6)	PN-10 (SDR 11)	PN-16 (SDR 7.4)	PN-20 (SDR 6)	
50°C	1	5.5	9.1	14.4	18.2	
	5	5.1	8.5	13.5	17.0	
	10	5.0	8.2	13.1	16.5	
	25	4.8	8.0	12.6	15.9	
	50	4.6	7.7	12.2	15.4	
	100	4.5	7.4	11.8	14.9	
60°C	1	4.6	7.6	12.1	15.5	
	5	4.3	7.2	11.4	14.5	
	10	4.2	6.9	11.0	13.8	
	25	4.0	6.7	10.5	13.3	
	50	3.8	6.4	10.1	12.7	
	100	3.9	6.5	10.3	13.0	
70°C	1	3.9	6.5	10.3	13.0	
	5	3.6	6.0	9.5	11.9	
	10	3.5	5.9	9.3	11.7	
	25	3.0	5.1	8.0	10.1	
	50	2.6	4.3	10.1	8.5	
	80°C	1	3.3	5.5	8.6	10.9
5		2.9	4.8	7.6	9.6	
10		2.4	4.0	6.3	8.0	
25		1.9	3.2	5.1	6.4	
95°C		1	2.3	3.9	6.1	7.7
		5	1.5	2.5	4.0	5.0
	(10)'	(1.3)'	(2.1)'	(3.4)'	(4.2)'	

PARTHIV AQUA PPRC PIPES



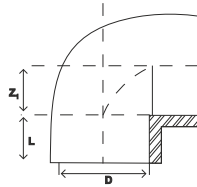
Available In Colours **GREEN** **WHITE**

COUPLING



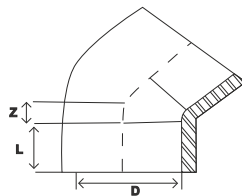
CODE	SIZE	D	L	Z	H
PPE C-0001	16MM	15.4	16	1.6	33.6
PPE C-0002	20 MM	19.2	14.5	3.9	32.9
PPE C-0003	25 MM	24.1	18.0	2.6	38.6
PPE C-0004	32 MM	31.0	18.4	3.0	39.8
PPE C-0005	40 MM	38.9	20.7	3.4	44.8
PPE C-0006	50 MM	48.0	24.4	3.1	51.9
PPE C-0007	63 MM	60.7	28.2	8.2	64.6
PPE C-0008	75 MM	71.9	31.5	4.0	67.0
PPE C-0009	90 MM	86.4	32.5	6.1	71.1
PPE C-0010	110 MM	106.8	38.8	3.0	80.6
PPE C-0011	125 MM	122.0	44.0	8.7	96.7
PPE C-0012	160 MM	153.0	42.5	5.4	90.4

ELBOW 90°



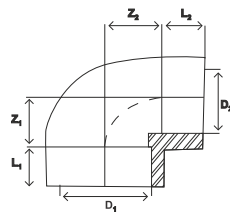
CODE	SIZE	D	L	Z	H
PPE E90-0013	16MM	15.5	14.4	8.5	34.3
PPE E90-0014	20 MM	19.1	15.5	10.9	40.0
PPE E90-0015	25 MM	24.2	16.9	14.1	47.4
PPE E90-0016	32 MM	31.1	18.0	16.4	54.2
PPE E90-0017	40 MM	39.5	20.0	20.0	66.2
PPE E90-0018	50 MM	48.4	23.8	26.2	80.3
PPE E90-0019	63 MM	60.5	27.4	32.2	98.2
PPE E90-0020	75 MM	72.6	31.5	38.0	115.4
PPE E90-0021	90 MM	86.8	33.0	44.7	130.6
PPE E90-0022	110 MM	106.	39.0	54.8	160.6
PPE E90-0023	125MM	123.6	43.0	71.0	150.0
PPE E90-0024	160 MM	153.6	45.0	78.7	220.8
PPE E90-0025	200MM
PPE E90-0026	250MM
PPE E90-0027	315MM
PPE E90-0028	355MM
PPE E90-0029	400MM

ELBOW 45°



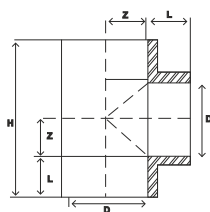
CODE	SIZE	D	L	Z
PPE E45-0030	20 MM	19.3	15.5	6.0
PPE E45-0031	25 MM	23.7	17.6	7.0
PPE E45-0032	32 MM	30.6	16.5	8.0
PPE E45-0033	40 MM	38.2	21.3	9.0
PPE E45-0034	50 MM	47.7	22.5	12.0
PPE E45-0035	63MM	60.0	26.0	13.0
PPE E45-0036	75 MM	72.5	26.7	20.0
PPE E45-0037	90 MM	86.8	34.5	32.0
PPE E45-0038	110 MM	106.2	35.3	40.0
PPE E45-0039	125 MM
PPE E45-0040	160 MM	154.9	48.2	50.0
PPE E45-0041	200 MM
PPE E45-0042	250 MM
PPE E45-0043	315MM
PPE E45-0044	355 MM
PPE E45-0045	400 MM

REDUCING ELBOW



CODE	SIZE	D1	D2	L1	L2	Z1	Z2
PPE RE-0403	25/20	24.0	19.2	18.5	16.0	17.8	14.4
PPE RE-0404	32/20	31.3	19.2	21.1	16.0	18.3	18.0
PPE RE-0405	32/25	31.3	24.2	20.0	17.8	22.2	20.7
PPE RE-0406	40/20	38.7	19.2	21.6	16.3	19.6	24.2
PPE RE-0407	40/25	38.7	24.2	21.6	17.8	21.4	20.7
PPE RE-0408	40/32	38.6	31.2	21.9	19.8	24.2	25.3

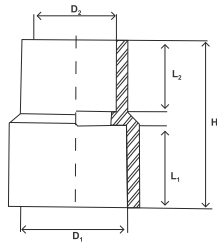
EQUAL TEE



CODE	SIZE	D	L	Z	H
PPE ET-0046	16MM	15.3	14.6	8.9	46.9
PPE ET-0047	20 MM	19.3	15.8	10.5	52.6
PPE ET-0048	25 MM	24.2	18.0	12.7	61.4
PPE ET-0049	32 MM	31.4	20.2	16.1	72.5
PPE ET-0050	40 MM	39.0	20.3	20.9	82.4
PPE ET-0051	50 MM	48.6	24.4	24.5	97.8
PPE ET-0052	63 MM	61.7	27.4	32.6	120.0
PPE ET-0053	75 MM	72.2	31.3	36.7	136.0
PPE ET-0054	90 MM	86.9	32.9	47.1	160.0
PPE ET-0055	110 MM	106.7	38.8	55.3	188.2
PPE ET-0056	125 MM	122.2	42.2	101.3	287.0
PPE ET-0057	160 MM	153.7	45.0	85.0	260.0
PPE ET-0058	200MM
PPE ET-0059	250MM
PPE ET-0060	315MM
PPE ET-0061	355MM
PPE ET-0062	400MM



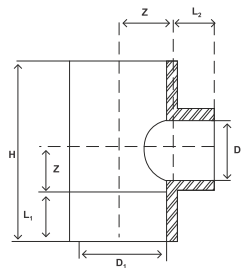
REDUCER



CODE	SIZE	D1	D2	L1	L2	H
PPE R-0063	25/20	24.0	19.2	18.5	15.7	38.1
PPE R-0064	32/20	31.3	19.2	20.0	15.7	39.3
PPE R-0065	32/25	31.4	24.4	21.0	18.4	41.7
PPE R-0066	40/20	38.7	19.3	22.9	16.9	48.0
PPE R-0067	40/25	39.0	24.2	24.2	18.0	48.5
PPE R-0068	40/32	38.6	31.0	21.1	18.8	44.9
PPE R-0069	50/20	48.0	18.8	24.6	16.6	44.5
PPE R-0070	50/25	48.0	23.8	24.5	16.2	45.6
PPE R-0071	50/32	48.0	31.1	24.4	18.0	48.1
PPE R-0072	50/40	48.2	38.8	24.3	20.9	48.2
PPE R-0073	63/20	60.9	19.2	28.2	15.9	48.3
PPE R-0074	63/25	60.7	24.1	28.2	18.0	49.5
PPE R-0075	63/32	60.6	30.7	28.0	18.0	48.0
PPE R-0076	63/40	60.8	38.3	25.3	25.5	56.8

CODE	SIZE	D1	D2	L1	L2	H
PPE R-0077	63/50	60.9	48.2	29.2	25.8	64.8
PPE R-0078	75/20	72.5	19.0	42.7	21.1	63.8
PPE R-0079	75/25	72.5	24.3	42.7	21.1	63.8
PPE R-0080	75/32	72.5	31.0	42.7	21.1	63.8
PPE R-0081	75/40	72.2	38.7	31.6	22.5	63.6
PPE R-0082	75/50	72.1	48.4	31.7	27.0	63.2
PPE R-0083	75/63	71.8	60.9	31.4	30.0	67.0
PPE R-0084	90/20	87.3	19.0	43.5	27.0	70.5
PPE R-0085	90/25	87.3	24.1	43.5	27.0	70.5
PPE R-0086	90/32	87.3	31.0	42.5	27.0	70.5
PPE R-0087	90/40	87.3	38.9	42.5	27.0	70.5
PPE R-0088	90/50	86.5	48.1	33.0	26.3	70.0
PPE R-0089	90/63	86.6	60.9	32.8	29.9	68.8
PPE R-0090	90/75	86.7	72.7	37.2	31.5	71.7
PPE R-0091	110/20	106.8	19.0	58.1	19.5	76.0
PPE R-0092	110/25	106.8	24.0	53.3	19.2	76.0
PPE R-0093	110/32	106.8	31.0	57.6	19.5	76.0
PPE R-0094	110/40	106.8	39.0	56.6	19.3	76.0
PPE R-0095	110/50	106.8	48.4	38.9	26.0	76.0
PPE R-0096	110/63	106.8	61.2	38.9	30.1	76.0
PPE R-0097	110/75	106.8	72.6	38.9	31.8	76.0
PPE R-0098	110/90	106.8	86.6	38.9	33.0	76.0
PPE R-0099	125/110	122.2	104.3	43.0	40.0	96.0
PPE R-0100	160/20	155.3	18.9	61.8	29.5	91.2
PPE R-0101	160/25	155.3	23.9	61.8	29.5	91.2
PPE R-0102	160/32	155.3	30.6	61.8	29.5	91.2
PPE R-0103	160/40	155.3	38.7	61.8	29.5	91.2
PPE R-0104	160/50	155.3	48.5	61.8	29.5	91.2
PPE R-0105	160/63	155.3	61.8	61.8	29.5	91.2
PPE R-0106	160/75	155.3	73.5	61.8	29.5	91.2
PPE R-0107	160/90	155.3	86.6	61.8	29.5	91.2
PPE R-0108	160/110	155.3	106.3	61.8	29.5	91.2
PPE R-0109	160/125	157.3	122.1	43.0	40.0	92.1

REDUCING TEE



CODE	SIZE	D1	D2	L1	L2	Z	H
PPE RT-0110	25/20/25	24.2	19.1	17.6	16.2	10.8	56.8
PPE RT-0111	32/20/32	31.1	19.1	19.8	16.5	11.3	62.2
PPE RT-0112	32/25/32	31.4	24.2	20.0	17.8	13.4	66.8
PPE RT-0113	40/20/40	39.0	19.1	21.4	16.5	11.1	65.0
PPE RT-0114	40/25/40	38.8	24.2	21.4	17.6	13.5	69.8
PPE RT-0115	40/32/40	38.8	31.0	21.4	19.5	16.8	76.4
PPE RT-0116	50/20/50	48.4	19.1	24.4	18.1	24.5	97.7
PPE RT-0117	50/25/50	48.6	24.1	24.3	17.9	24.7	98.0
PPE RT-0118	50/32/50	48.6	30.5	24.3	18.8	24.6	97.8
PPE RT-0119	50/40/50	48.6	38.7	22.4	22.0	26.1	96.9
PPE RT-0120	63/20/63	61.2	19.0	27.5	16.2	32.2	119.4
PPE RT-0121	63/25/63	61.3	23.8	27.5	19.4	32.2	119.4
PPE RT-0122	63/32/63	61.3	30.8	27.5	19.3	32.2	119.4
PPE RT-0123	63/40/63	61.3	38.9	27.3	22.5	32.4	119.4
PPE RT-0124	63/50/63	61.2	48.0	27.4	25.8	32.3	119.4
PPE RT-0125	75/20/75	72.5	19.0	31.4	15.9	26.4	115.5
PPE RT-0126	75/25/75	72.5	24.0	31.4	17.6	26.4	115.5
PPE RT-0127	75/32/75	72.5	30.9	31.4	19.7	26.4	115.5
PPE RT-0128	75/40/75	72.3	38.4	31.4	20.3	26.4	115.5
PPE RT-0129	75/50/75	72.3	47.9	31.4	29.8	26.4	115.5

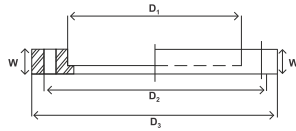
CODE	SIZE	D1	D2	L1	L2	Z	H
PPE RT-0130	75/63/75	72.2	60.2	31.4	29.8	26.4	115.5
PPE RT-0131	90/20/90	86.5	19.0	32.8	15.6	31.3	128.1
PPE RT-0132	90/25/90	86.5	24.0	32.8	17.6	31.3	128.1
PPE RT-0133	90/32/90	86.5	31.0	32.8	19.5	31.3	128.1
PPE RT-0134	90/40/90	86.5	38.6	32.8	21.2	31.3	128.1
PPE RT-0135	90/50/90	86.5	48.1	32.8	26.0	31.3	128.1
PPE RT-0136	90/63/90	86.5	61.2	32.8	30.1	31.3	128.1
PPE RT-0137	90/75/90	86.5	72.4	32.9	31.7	46.9	159.5
PPE RT-0138	110/20/110	106.5	19.0	38.7	15.8	38.5	154.3
PPE RT-0139	110/25/110	106.5	24.2	38.7	17.7	38.5	154.3
PPE RT-0140	110/32/110	106.5	31.0	38.7	19.7	38.5	154.3
PPE RT-0141	110/40/110	106.5	38.9	38.7	21.5	38.5	154.3
PPE RT-0142	110/50/110	106.5	48.6	38.9	26.2	38.3	154.3
PPE RT-0143	110/63/110	106.7	61.3	39.0	30.2	38.2	154.3
PPE RT-0144	110/75/110	106.4	72.5	39.0	32.0	38.2	154.3
PPE RT-0145	110/90/110	106.7	87.1	38.9	33.0	54.8	187.4
PPE RT-0146	125/110/125	122.5	107.5	44.0	44.0	64.0	216.0
PPE RT-0147	160/20/160	155.4	19.0	45.0	15.8	80.9	251.8
PPE RT-0148	160/25/160	155.4	23.8	45.0	18.5	80.9	251.8
PPE RT-0149	160/32/160	155.4	31.0	45.0	19.5	80.9	251.8
PPE RT-0150	160/40/160	155.4	38.9	45.0	21.5	80.9	251.8
PPE RT-0151	160/50/160	155.4	48.8	45.0	25.4	80.9	251.8
PPE RT-0152	160/63/160	157.5	61.9	45.0	27.6	80.9	251.8
PPE RT-0153	160/75/160	157.5	73.9	45.0	32.1	80.9	251.8
PPE RT-0154	160/90/160	157.5	88.5	45.0	33.0	80.9	251.8
PPE RT-0155	160/110/160	157.5	107.4	45.0	44.9	80.9	251.8
PPE RT-0156	200/90/200
PPE RT-0157	200/110/200
PPE RT-0158	200/125/200
PPE RT-0159	200/160/200
PPE RT-0160	250/90/250
PPE RT-0161	250/110/250
PPE RT-0162	250/125/250
PPE RT-0163	250/160/250
PPE RT-0164	250/200/250
PPE RT-0165	315/160/315
PPE RT-0166	315/200/315

PARTHIV AQUA PPRC PIPES



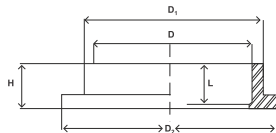
Available In Colours **GREEN** **WHITE**

SLIP ON (PPRC STEEL INLAY FLANGE)



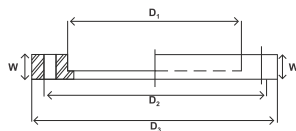
CODE	SIZE	PCD	MS Flange Wall Thickness	(PPR +MS) Wall Thickness	Flange OD.	Flange ID.	No of Hole	Bolt Dia
PPE SIF-0216	20 MM	73.0	4.8	16.9	113.4	32.0	4	12.7
PPE SIF-0217	25 MM	82.6	4.8	17.0	126.2	37.1	4	12.7
PPE SIF-0218	32 MM	87.6	6.4	16.7	136.0	44.4	4	12.7
PPE SIF-0219	40 MM	98.4	6.4	17.8	149.7	51.2	4	12.7
PPE SIF-0220	50 MM	114.3	7.9	20.7	170.8	63.2	4	15.9
PPE SIF-0221	63 MM	127.0	7.9	20.7	183.5	82.6	4	15.9
PPE SIF-0222	75 MM	146.1	9.5	21.6	204.9	98.3	4	15.9
PPE SIF-0223	90 MM	165.1	9.5	23.6	222.7	114.8	4	15.9
PPE SIF-0224	110 MM	177.8	9.5	25.6	235.6	136.9	4	15.9
PPE SIF-0225	125 MM	209.6	12.7	28.5	273.7	160.1	8	15.9
PPE SIF-0226	160 MM	260.4	12.7	25.0	345.0	196.0	8	15.9
PPE SIF-0227	200 MM	292.1	12.7	26.0	366.0	218.0	8	15.9
PPE SIF-0228	250 MM	355.6	19.1	27.8	430.0	272.0	8	15.9
PPE SIF-0229	315 MM	406.4	19.1	30.0	492.0	320.0	12	19.1

FLANGE CORE (STUB END)



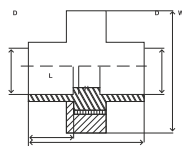
CODE	SIZE	D	D1	D2	L	H
PPE FC-0189	20 MM	19.2	29.9	44.6	20.7	24.2
PPE FC-0190	25 MM	24.1	33.9	49.7	20.0	24.0
PPE FC-0191	32 MM	31.1	42.9	50.5	19.9	23.3
PPE FC-0192	40 MM	31.1	49.6	60.2	20.3	25.8
PPE FC-0193	50 MM	48.1	62.6	72.3	22.2	27.2
PPE FC-0194	63 MM	61.0	80.7	95.0	20.9	35.4
PPE FC-0195	75 MM	72.6	95.0	111.3	31.9	39.0
PPE FC-0196	90 MM	87.1	111.8	129.4	24.2	42.1
PPE FC-0197	110 MM	106.8	133.3	151.0	25.4	43.3
PPE FC-0198	125 MM	123.8	157.6	179.8	43.4	68.0
PPE FC-0199	160 MM	155.0	194.4	214.0	31.0	52.8
PPE FC-0200	200MM	166.1	211.0	251.5	54.8	80.3
PPE FC-0201	250MM	213.8	261.4	312.0	80.5	84.4
PPE FC-0202	315MM	253.5	310.5	380.0	71.0	94.0
PPE FC-0203	355MM	300.0	355.0	427.0	63.8	119.0
PPE FC-0204	400MM	352.0	400.0	477.0	70.0	117.0

SLIP-ON (PPRC FLANGES)



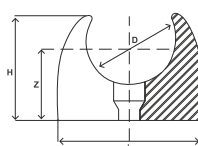
CODE	SIZE	D1	D2	D3	W
PPE F-0205	20 MM	31.5	67.6	112	17.7
PPE F-0206	25 MM	36.8	73.2	112	17.8
PPE F-0207	32 MM	43.6	97.0	115.7	20.6
PPE F-0208	40 MM	50.0	109.0	128.0	21.6
PPE F-0209	50 MM	62.5	122.0	140.7	22.5
PPE F-0210	63 MM	83.0	141.4	157.4	24.3
PPE F-0211	75 MM	97.0	175.3	172.3	26.2
PPE F-0212	90 MM	113.7	178.3	194.8	26.4
PPE F-0213	110 MM	135.7	197.9	216.0	30.6
PPE F-0214	125 MM	157.0	208.0	257.0	33.2
PPE F-0215	160 MM	195.8	266.0	292.0	35.5

PLAIN UNION



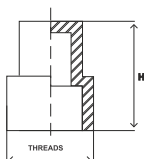
CODE	SIZE	D	L	W	H
PPE U-0230	20 MM	19.2	17.7	52.2	44.4
PPE U-0231	25 MM	24.2	18.6	51.4	55.2
PPE U-0232	32 MM	31.2	22.1	61.5	67.5
PPE U-0233	40 MM	39.2	29.2	79.0	79.9
PPE U-0234	50 MM	47.7	23.6	78.0	96.1
PPE U-0235	63 MM	60.7	27.7	89.0	107.6

PIPE CLAMP



CODE	SIZE	D	L	W	H
PPE PC-0242	16 MM	15.2	23.0	14.1	26.0
PPE PC-0243	20 MM	18.9	27.0	19.2	31.0
PPE PC-0244	25 MM	24.0	32.0	21.0	36.0
PPE PC-0245	32 MM	30.7	39.5	27.5	43.5
PPE PC-0246	40 MM	39.1	48.3	30.9	49.8
PPE PC-0247	50 MM	50.0	60.0	37.3	61.5
PPE PC-0248	63 MM	63.0	74.7	45.0	75.3

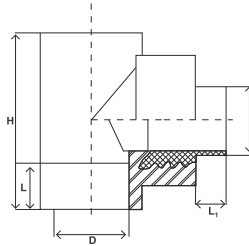
LONG PLUG



CODE	SIZE	THREADS	H
PPE LP-0249	1/2"	1/2"	69.7
PPE LP-0250	3/4"	3/4"	62.2
PPE LP-0251	1"	1"	73.6

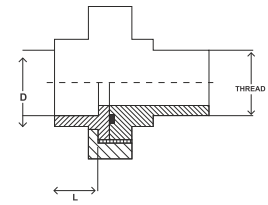


MALE THREADED TEE



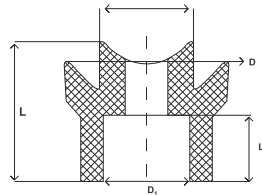
CODE	SIZE	THREADS	D	L	L1	H
PPE MTT-0315	20 ^ø 1/2	1/2"	19.2	15.0	14.0	58.2
PPE MTT-0316	25 ^ø 1/2	1/2"	24.2	14.9	14.0	62.2
PPE MTT-0317	25 ^ø 3/4	3/4"	24.2	16.2	13.9	63.8
PPE MTT-0318	32 ^ø 1/2	1/2"	31.3	15.0	14.2	78.0
PPE MTT-0319	32 ^ø 3/4	3/4"	31.3	16.2	14.2	78.2
PPE MTT-0320	32 ^ø 1	1"	31.2	17.7	15.8	77.8
PPE MTT-0321	40 ^ø 1-1/4	1 1/4"	39.0	17.6	15.2	91.0

MALE THREADED UNION



CODE	SIZE	THREADS	D	L
PPE MTU-0345	20 ^ø 1/2	1/2"	19.2	17.8
PPE MTU-0346	25 ^ø 3/4	3/4"	24.2	19.0
PPE MTU-0347	32 ^ø 1	1"	31.3	23.5
PPE MTU-0348	40 ^ø 1-1/4	1 1/4"	39.2	28.5
PPE MTU-0349	50 ^ø 1-1/2	1 1/2"	47.6	24.6
PPE MTU-0350	63 ^ø 2	2"	60.6	28.1

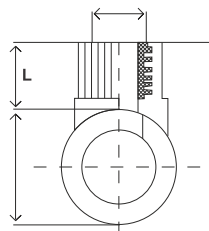
WELD IN SADDLE REDUCER



CODE	SIZE	D	D1	L	L1
PPE WIS R-0377	63/32	48.8	30.8	40.2	19.9
PPE WIS R-0378	75/32	48.8	30.8	40.2	19.9
PPE WIS R-0379	90/20	78.5	19.1	62.1	15.5
PPE WIS R-0380	90/25	78.5	24.2	62.1	17.5
PPE WIS R-0381	90/32	78.5	31.0	62.1	19.1
PPE WIS R-0382	90/40	79.2	38.9	62.1	21.4
PPE WIS R-0383	90/50	79.2	48.8	62.1	21.7

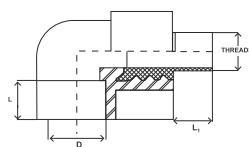
CODE	SIZE	D	D1	L	L1
PPE WIS R-0384	90/63	79.2	62.7	62.1	27.5
PPE WIS R-0385	110/20	88.0	19.0	66.7	15.5
PPE WIS R-0386	110/25	88.0	24.0	66.7	17.3
PPE WIS R-0387	110/32	88.0	31.0	66.7	19.3
PPE WIS R-0388	110/40	88.0	39.1	66.7	21.5
PPE WIS R-0389	110/50	88.0	48.8	66.7	25.2
PPE WIS R-0390	110/63	88.0	62.4	66.7	27.4
PPE WIS R-0391	160/20	89.8	19.0	62.0	15.6
PPE WIS R-0392	160/25	89.8	23.9	62.0	17.3
PPE WIS R-0393	160/32	89.8	31.2	62.0	19.4
PPE WIS R-0394	160/40	89.8	38.8	62.0	21.3
PPE WIS R-0395	160/50	89.8	49.1	62.0	21.5
PPE WIS R-0396	160/63	89.8	62.5	62.0	27.3
PPE WIS R-0397	200/20	90.2	19.1	66.0	15.6
PPE WIS R-0398	200/25	90.2	24.1	66.0	17.7
PPE WIS R-0399	200/32	90.2	31.2	66.0	19.4
PPE WIS R-0400	200/40	90.2	39.0	66.0	21.4
PPE WIS R-0401	200/50	90.2	48.8	66.0	25.0
PPE WIS R-0402	200/63	90.2	62.5	66.0	27.3

WELD IN SADDLE FEMALE THREADED COUPLING



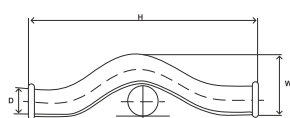
CODE	SIZE	D	D1	L	L1
PPE WIS M-0367	160 ^ø 1/2	1/2"	16.3	49.2	41.3
PPE WIS M-0368	110 ^ø 1/2	1/2"	16.3	49.2	41.3
PPE WIS M-0369	90 ^ø 1/2	1/2"	16.3	49.2	41.3
PPE WIS M-0370	75 ^ø 1/2	1/2"	16.3	49.2	41.3
PPE WIS M-0371	63 ^ø 1/2	1/2"	16.3	49.2	41.3
PPE WIS M-0372	160 ^ø 3/4	3/4"	16.0	49.1	41.3
PPE WIS M-0373	110 ^ø 3/4	3/4"	16.0	49.1	41.3
PPE WIS M-0374	90 ^ø 3/4	3/4"	16.0	49.1	41.3
PPE WIS M-0375	75 ^ø 3/4	3/4"	16.0	49.1	41.3
PPE WIS M-0376	63 ^ø 3/4	3/4"	16.0	49.1	41.3

MALE THREADED ELBOW



CODE	SIZE	THREADS	D	L	L1
PPE MTE-0329	20 ^ø 1/2	1/2"	19.2	16.1	15.0
PPE MTE-0330	25 ^ø 1/2	1/2"	24.1	17.9	15.0
PPE MTE-0331	25 ^ø 3/4	3/4"	24.2	18.0	14.2
PPE MTE-0332	32 ^ø 1/2	1/2"	31.3	21.0	14.3
PPE MTE-0333	32 ^ø 3/4	3/4"	31.3	20.4	15.2
PPE MTE-0334	32 ^ø 1	1"	31.3	20.1	27.0
PPE MTE-0335	40 ^ø 1-1/4	1 1/4"	39.0	24.5	21.8

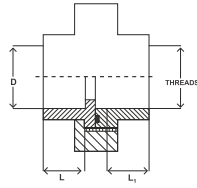
BYPASS BEND



CODE	SIZE	D	W	H
PPE BPB-0363	20 MM	19.3	40	86
PPE BPB-0364	25 MM	23.9	47.0	94.9
PPE BPB-0365	32 MM	31.2	58.0	106.0
PPE BPB-0366	40 MM	37.9	80.0	133.0

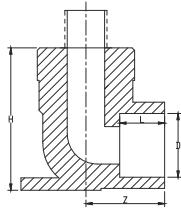


FEMALE THREADED UNION



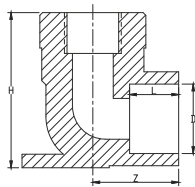
CODE	SIZE	THREADS	D	L	L1
PPE FTU-0351	20*1/2	1/2"	19.2	17.5	18.0
PPE FTU-0352	25*3/4	3/4"	24.2	19.0	18.5
PPE FTU-0353	32*1	1"	31.2	23.6	20.4
PPE FTU-0354	40*1-1/4	1 1/4"	39.2	28.4	23.0
PPE FTU-0355	50*1-1/2	1 1/2"	47.7	23.6	31.5
PPE FTU-0356	63*2	2"	60.6	28.4	28.7

MALE THREADED ELBOW WITH DISK



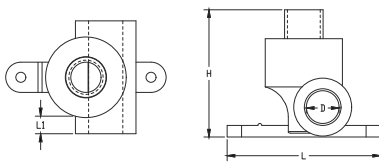
CODE	SIZE	THREADS	D	L	Z	T
PPE MTEWD-0419	20*1/2	1/2"	19.1	15.8	15.0	65
PPE MTEWD-0420	25*1/2	1/2"	24.0	17.6	16.2	70

FEMALE THREADED ELBOW WITH DISK



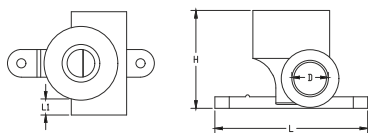
CODE	SIZE	THREADS	D	L	Z	T
PPE FTEWD-0421	20*1/2	1/2"	19.1	15.8	15.0	50
PPE FTEWD-0422	25*1/2	1/2"	24.0	17.6	16.2	55

MALE THREADED TEE WITH DISK



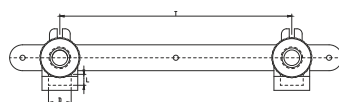
CODE	SIZE	THREADS	D	L	Z	T
PPE MTTWD-0423	20*1/2	1/2"	19.1	16.0	56.0	64
PPE MTTWD-0424	25*1/2	1/2"	24.0	17.2	57.7	70

FEMALE THREADED TEE WITH DISK



CODE	SIZE	THREADS	D	L	Z	T
PPE FTTWD-0425	20*1/2	1/2"	19.1	16.0	56.0	50
PPE FTTWD-0426	25*1/2	1/2"	24.0	17.2	57.8	56

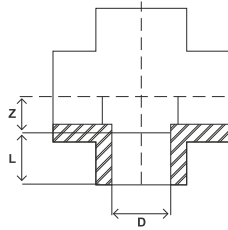
DOUBLE FEMALE ELBOW WITH DISK



CODE	SIZE	THREADS	D	L	Z	T
PPE DFETWD-0417	20*1/2	1/2"	18.7	15.8	16.0	149.5
PPE DFETWD-0418	25*1/2	1/2"	24.0	17.6	16.2	149.5

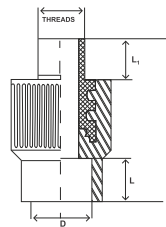


4WAY/CROSS TEE



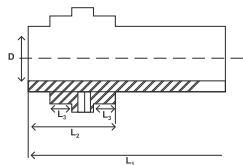
CODE	SIZE	D	L	Z
PPE CT-0236	20 MM	18.8	15.5	15.4
PPE CT-0237	25 MM	24.1	17.1	24.9
PPE CT-0238	32 MM	30.6	17.8	32.2
PPE CT-0239	40 MM	38.0	20.8	39.2
PPE CT-0240	50 MM	48.0	21.3	52.2
PPE CT-0241	63 MM	60.7	23.3	63.6

MALE THREADED COUPLING



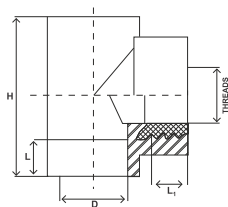
CODE	SIZE	THREADS	D	L	L1	H
PPE MTC-0279	16*1/2	1/2"	15.7	17.0	13.9	57.3
PPE MTC-0280	20*1/2	1/2"	19.2	16.2	14.2	57.0
PPE MTC-0281	25*1/2	1/2"	23.8	18.3	14.2	56.0
PPE MTC-0282	25*3/4	3/4"	24.1	18.2	14.1	59.1
PPE MTC-0283	32*1/2	1/2"	31.1	19.8	14.0	64.5
PPE MTC-0284	32*3/4	3/4"	31.1	20.3	14.2	67.8
PPE MTC-0285	32*1	1"	31.1	20.2	28.0	71.8
PPE MTC-0286	40*1	1"	38.7	21.6	28.0	76.0
PPE MTC-0287	40*1-1/4	1 1/4"	38.8	22.1	14.1	76.0
PPE MTC-0288	50*1-1/2	1 1/2"	48.9	25.5	21.3	80.0
PPE MTC-0289	63*2	2"	62.2	29.5	26.3	95.2
PPE MTC-0290	75*2-1/2	2 1/2"	72.0	32.4	24.9	100.5
PPE MTC-0291	90*3	3"	86.4	38.2	24.6	109.2
PPE MTC-0292	110*4	4"	104.9	38.1	25.5	119.0

TANK CONNECTOR



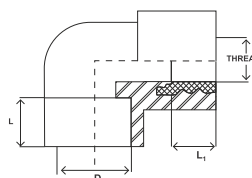
CODE	SIZE	D	L1	L2	L3
PPE TC-0252	20 MM	19.2	69.0	43.6	15.2
PPE TC-0253	25 MM	24.1	69.0	52.5	19.5
PPE TC-0254	32 MM	30.6	74.3	54.5	21.5
PPE TC-0255	40 MM	38.4	88.4	55.3	25.6
PPE TC-0256	50 MM	48.3	96.7	58.4	24.6
PPE TC-0257	63 MM	60.7	101.5	65.5	27.0

FEMALE THREADED TEE



CODE	SIZE	THREADS	D	L	L1	H
PPE FTT-0308	20*1/2	1/2"	19.2	15.0	14.0	58.2
PPE FTT-0309	25*1/2	1/2"	24.2	14.9	14.0	62.2
PPE FTT-0310	25*3/4	3/4"	24.2	16.2	13.9	63.8
PPE FTT-0311	32*1/2	1/2"	31.3	15.0	14.2	78.0
PPE FTT-0312	32*3/4	3/4"	31.3	16.2	14.2	78.2
PPE FTT-0313	32*1	1"	31.2	17.7	15.8	77.8
PPE FTT-0314	40*1-1/4	1 1/4"	39.0	17.6	15.2	91.0

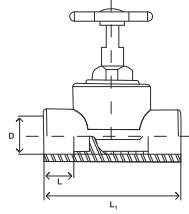
FEMALE THREADED ELBOW



CODE	SIZE	THREADS	D	L	L1
PPE FTE-0322	20*1/2	1/2"	19.2	16.1	16.0
PPE FTE-0323	25*1/2	1/2"	24.1	17.9	15.0
PPE FTE-0324	25*3/4	3/4"	24.2	17.9	16.0
PPE FTE-0325	32*1/2	1/2"	31.2	20.2	15.0
PPE FTE-0326	32*3/4	3/4"	31.2	20.2	16.1
PPE FTE-0327	32*1	1"	31.2	20.3	18.3
PPE FTE-0328	40*1-1/4	1 1/4"	39.1	21.3	17.9

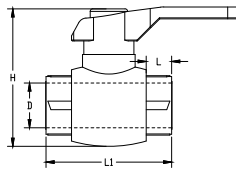


GATE VALVE



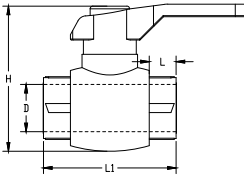
CODE	SIZE	D	L	L1
PPE GV-0336	20 MM	19.0	15.0	60.5
PPE GV-0337	25 MM	24.0	16.8	69.2
PPE GV-0338	32 MM	31.1	20.0	79.5
PPE GV-0339	40 MM	39.0	21.4	92.5
PPE GV-0340	50 MM	48.0	24.0	112.2
PPE GV-0341	63 MM	60.6	26.0	119.1
PPE GV-0342	75 MM	72.3	30.8	133.4
PPE GV-0343	90 MM	86.0	30.8	178.0
PPE GV-0344	110 MM	106.0	41.6	200.0

BALL VALVE PLASTIC (FOR COLD WATER)



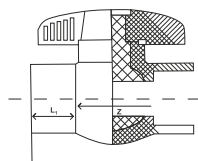
CODE	SIZE	D	L1	L	H
PPE PBV-0262	50 MM	48.8	125.0	33.0	122.0
PPE PBV-0263	63 MM	62.1	147.0	38.0	138.0

BRASS BALL VALVE (FOR HOT WATER)



CODE	SIZE	D1	D2	L	Z	H
PPE BBV-0264	20 MM	18.90	19.35	20.90	26.50	70.55
PPE BBV-0265	25 MM	23.80	24.25	20.50	33.15	76.90
PPE BBV-0266	32 MM	30.80	31.10	24.00	37.65	86.70
PPE BBV-0267	40 MM	38.80	38.98	21.38	60.89	98.35
PPE BBV-0268	50 MM	48.90	49.10	22.80	68.20	122.25
PPE BBV-0269	63 MM	61.68	61.85	26.25	78.00	133.25

BALL VALVE PLASTIC (FOR COLD WATER)



CODE	SIZE	D1	D2	L	Z	H
PPE PBV-0258	20 MM	19.10	19.35	16.15	41.35	64.25
PPE PBV-0259	25 MM	23.80	24.30	18.00	41.20	72.70
PPE PBV-0260	32 MM	30.85	31.20	19.90	46.90	82.65
PPE PBV-0261	40 MM	38.25	38.95	25.38	52.44	97.25

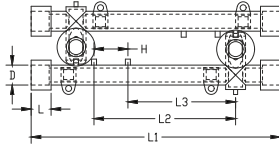
FLANGE END BALL VALVE



CODE	SIZE	Flange Ball Valve Bore ID (mm)	Ball Valve Flange OD (mm)	Flange Ball Valve No. of Hole	Ball Valve Flange Hole PCD (mm)	Ball Valve Flange Hole Length/Wid th (mm)	Flange Ball Valve Height (mm)
PPE FEBV-0270	20 MM	18.5	100.0	4.0	71.0	16.5/15.0	142.8
PPE FEBV-0271	25 MM	24.1	122.0	4.0	84.8	18.8/13.8	158
PPE FEBV-0272	32 MM
PPE FEBV-0273	40 MM	37.55	138.00	4.00	101.56	22.10/15.90	101.55
PPE FEBV-0274	50 MM	49.67	167.40	4.00	116.05	24.60/17.80	116.10
PPE FEBV-0275	63 MM
PPE FEBV-0276	75MM	63.65	180.10	4.00	128.42	31.70/18.55	128.40
PPE FEBV-0277	90 MM	72.90	198.45	4.00	152.75	26.75/18.08	152.70
PPE FEBV-0278	110 MM	98.40	221.37	8.00	181.20	23.68/18.42	181.20

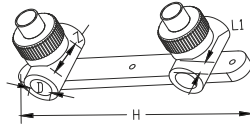


DOUBLE BATTERY TAP CONNECTOR



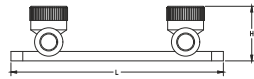
CODE	SIZE	THREADS	D	L	L1	L2	H
PPE DBTC F-0409	20*1/2	1/2"	19.1	17.3	248	101	30
PPE DBTC F-0410	25*1/2	1/2"	24.0	18.5	248	101	30

DOUBLE MALE THREADED TEE WITH DISK



CODE	SIZE	THREADS	D	L1	Z	H
PPE DMTWD -0411	20*1/2	1/2"	19.1	16.0	25.3	150
PPE DMTWD -0412	25*1/2	1/2"	24.0	18.0	25.2	150

DOUBLE FEMALE THREADED TEE WITH DISK



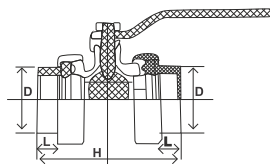
CODE	SIZE	THREADS	D	L1	Z	H
PPE DMTWD -0413	20*1/2	1/2"	19.1	16.0	25.3	150
PPE DMTWD -0414	25*1/2	1/2"	24.0	18.0	25.2	150

DOUBLE MALE ELBOW WITH DISK



CODE	SIZE	THREADS	D	L	Z	T
PPE DMEWD -0415	20*1/2	1/2"	18.7	15.8	16.0	149.5
PPE DMEWD -0416	25*1/2	1/2"	24.0	17.6	16.2	149.5

DOUBLE UNION BALL VALVE



CODE	SIZE	D	L	H
PPE DUBV-0357	20 MM	18.7	16.3	84.1
PPE DUBV-0358	25 MM	23.8	17.4	95.7
PPE DUBV-0359	32 MM	30.8	21.8	107.3
PPE DUBV-0360	40 MM	38.9	25.2	125.3
PPE DUBV-0361	50 MM	48.7	27.3	147.0
PPE DUBV-0362	63 MM	61.4	29.0	168.5

CONCEALED VALVE



CODE	SIZE	D	L	L1
PPE CV-0427	20 MM	19.0	15.0	60.5
PPE CV-0428	25 MM	24.3	17.2	68.1
PPE CV-0429	32 MM	31.0	20.0	79.7



FUSION METHOD

The process of joining PPRC pipes and fittings is straightforward and produces strong, inseparable, and watertight joints. This is achieved through a fusion welding technique using a simple PPRC welding machine. During the process, the machine heats and softens the inner surface of the fitting and the outer surface of the pipe. Once heated, both components are pressed together, allowing their materials to fuse and form a single, homogeneous joint. This method ensures a durable connection that maintains long-term reliability and leak-proof performance.

WELDING PROCESS STEPS

- Prepare the welding machine by installing the appropriate welding dies for the required pipe diameter.
- Connect the machine to a 220V power supply and wait until the green indicator light switches off, confirming the machine has reached operating temperature.
- Cut the pipe at a right angle to its axis using a suitable pipe cutter.
- Remove all burrs and cutting chips by thoroughly deburring the cut area.
- Mark the required welding depth on the pipe using an appropriate marker.
- Insert the pipe end straight (without rotation) into the heating sleeve up to the marked welding depth.
- Simultaneously slide the fitting (without rotation) onto the opposite side of the heating tool until it reaches the stop.
- Maintain both pipe and fitting in the heating tool for the specified heating time (as per the provided table).
- After the heating time is completed, immediately remove both components and push them together up to the marked welding depth. The mark should become covered by the welding bead.
- Ensure no rotation occurs between pipe and fitting during the joining process.
- Allow the welded joint to cool completely before handling or putting it into service.



Recommended Time For PPR Systems Fusion Joints

PIPE DIA (MM)	WELDING DEPTH (MM)	HEATING TIME (SEC)	WELDING TIME (SEC)	COOLING TIME (MIN)
16	14.0	6	4	2
20	14.5	6	4	2
25	16.0	7	4	2
32	18.0	8	6	4
40	20.5	12	6	4
50	23.5	18	6	4
63	27.5	24	8	6
75	30.0	30	8	6
90	32.5	40	8	6
110	37.0	50	10	8
160	42.0	60	15	10

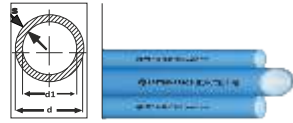
Recommended Time For PPR Systems Butt Joint

PIPE DIA (MM)	WELDING MACHINE TEMPERATURE °C	HEATING TIME (SEC)	WELDING TIME (SEC)	COOLING TIME (MIN)
200	200-240	30	180	15-20
250	200-240	30	240	16-24
315	225-240	30	300	20-25
355	225-240	30	360	25-30
400	225-240	30	420	30-35





PNEUMATIC PPRC PIPE SDR 11/ S 5/ PN 10



Pipe		Diameter	Wall Thickness	Internal Diameter	Water Content
Dimension	Packing Unit	d(mm)	S(mm)	di(mm)	litre/mtr
20mm	240m	20	1.9	16.2	0.206
25mm	180m	25	2.3	20.4	0.327
32mm	120m	32	2.9	26.2	0.539
40mm	75m	40	3.7	32.6	0.834
50mm	45m	50	4.6	40.8	1.307
63mm	30m	63	5.8	51.4	2.074
75mm	21m	75	6.8	61.4	2.959
90mm	15m	90	8.2	73.6	4.252
110mm	12m	110	10.0	90.0	6.359
125mm	9m	125	11.4	102.2	8.199
160mm	6m	160	14.6	130.8	13.430
200mm	3m	200	18.2	163.6	21.010
250mm	3m	250	22.7	204.6	32.861
315mm	3m	315	28.6	257.8	52.172
355mm	3m	355	32.2	290.6	66.292
400mm	3m	400	36.3	327.4	84.145

PNEUMATIC PPRC PIPE SDR 7.4/ S 3.2/ PN 16



Pipe		Diameter	Wall Thickness	Internal Diameter	Water Content
Dimension	Packing Unit	d(mm)	S(mm)	di(mm)	litre/mtr
16mm	300m	16	2.2	11.6	0.106
20mm	240m	20	2.8	14.4	0.163
25mm	180m	25	3.5	18.0	0.254
32mm	120m	32	4.4	23.2	0.423
40mm	75m	40	5.5	29.0	0.660
50mm	45m	50	6.9	36.2	1.029
63mm	30m	63	8.6	45.8	1.647
75mm	21m	75	10.3	54.4	2.323
90mm	15m	90	12.3	65.4	3.358
110mm	9m	110	15.1	79.8	4.999
125mm	9m	125	17.1	90.8	6.472
160mm	6m	160	21.9	116.2	10.599
200mm	3m	200	27.4	145.2	16.550
250mm	3m	250	34.2	181.6	25.888
315mm	3m	315	43.4	228.2	40.879
355mm	3m	355	49.0	257	51.848

PNEUMATIC PPRC PIPE SDR 6/ S 2.5 / PN 20



Pipe		Diameter	Wall Thickness	Internal Diameter	Water Content
Dimension	Packing Unit	d(mm)	S(mm)	di(mm)	litre/mtr
16mm	240m	16	2.7	10.6	0.088
20mm	210m	20	3.4	13.2	0.137
25mm	150m	25	4.2	16.6	0.216
32mm	105m	32	5.4	21.2	0.353
40mm	60m	40	6.7	26.6	0.555
50mm	36m	50	8.3	33.4	0.876
63mm	24m	63	10.5	42.0	1.385
75mm	21m	75	12.5	50.0	1.963
90mm	12m	90	15.0	60.0	2.826
110mm	9m	110	18.3	73.4	4.229
125mm	6m	125	20.8	83.4	5.460
160mm	3m	160	26.6	106.8	8.954

PNEUMATIC PPRC PIPE SDR 17.6/ S 8.3 / PN 6



Pipe		Diameter	Wall Thickness	Internal Diameter	Water Content
Dimension	Packing Unit	d(mm)	S(mm)	di(mm)	litre/mtr
63mm	30m	63	3.6	55.8	2.444
75mm	21m	75	4.3	66.4	3.461
90mm	15m	90	5.1	79.8	4.999
110mm	12m	110	6.3	97.4	7.447
125mm	9m	125	7.1	110.8	9.637
160mm	6m	160	9.1	141.8	15.784
200mm	3m	200	11.4	177.2	24.649
250mm	3m	250	14.2	221.6	38.549
315mm	3m	315	17.9	279.2	61.193
355mm	3m	355	20.1	314.8	77.793
400mm	3m	400	22.7	354.6	98.707

PERMISSIBLE WORKING PRESSURE

The below table list is the allowable working pressure for pipes with different pressure class under specific temperature and work life Under normal work pressure & conditions, the life of Parthiv PPRC Piping system is guaranteed to be 50 years at least.

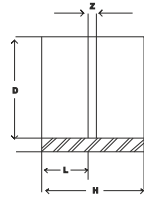
Temperature in C	Years of Service	Allowable working pressure, in bar for			
		PN-6 (SDR 17.6)	PN-10 (SDR 11)	PN-16 (SDR 7.4)	PN-20 (SDR 6)
10°C	1	10.0	17.6	27.8	35.0
	5	9.7	16.6	26.4	33.2
	10	9.4	16.1	25.5	32.1
	25	9.1	15.6	24.7	31.1
	50	8.9	15.2	24.0	30.3
	100	9.0	14.8	23.4	29.5
20°C	1	9.0	15.0	23.8	30.0
	5	8.5	14.1	22.3	28.1
	10	8.2	13.7	21.7	27.3
	25	8.0	13.3	21.1	26.5
	50	7.8	12.9	20.4	25.7
	100	7.5	12.5	19.8	24.9
30°C	1	7.7	12.8	20.2	25.5
	5	7.2	12.0	19.0	23.9
	10	7.0	11.6	18.3	23.1
	25	6.7	11.2	17.7	22.3
	50	6.6	10.9	17.3	21.3
	100	6.4	10.6	16.9	21.2
40°C	1	6.5	10.8	17.1	21.5
	5	6.1	10.1	16.0	20.2
	10	5.9	9.8	15.6	19.6
	25	5.7	9.4	15.0	18.8
	50	5.5	9.2	14.5	18.3
	100	5.4	8.9	14.1	17.8

Temperature in C	Years of Service	Allowable working pressure, in bar for				
		PN-6 (SDR 17.6)	PN-10 (SDR 11)	PN-16 (SDR 7.4)	PN-20 (SDR 6)	
50°C	1	5.5	9.1	14.4	18.2	
	5	5.1	8.5	13.5	17.0	
	10	5.0	8.2	13.1	16.5	
	25	4.8	8.0	12.6	15.9	
	50	4.6	7.7	12.2	15.4	
	100	4.5	7.4	11.8	14.9	
60°C	1	4.6	7.6	12.1	15.5	
	5	4.3	7.2	11.4	14.5	
	10	4.2	6.9	11.0	13.8	
	25	4.0	6.7	10.5	13.3	
	50	3.8	6.4	10.1	12.7	
	100	3.9	6.5	10.3	13.0	
70°C	1	3.9	6.5	10.3	13.0	
	5	3.6	6.0	9.5	11.9	
	10	3.5	5.9	9.3	11.7	
	25	3.0	5.1	8.0	10.1	
	50	2.6	4.3	10.1	8.5	
	80°C	1	3.3	5.5	8.6	10.9
5		2.9	4.8	7.6	9.6	
10		2.4	4.0	6.3	8.0	
25		1.9	3.2	5.1	6.4	
95°C		1	2.3	3.9	6.1	7.7
		5	1.5	2.5	4.0	5.0
	(10)'	(1.3)'	(2.1)'	(3.4)'	(4.2)'	

PARTHIV PNEUMATIC PPRC PIPES

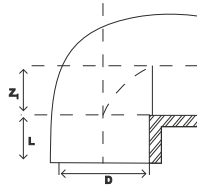


COUPLING



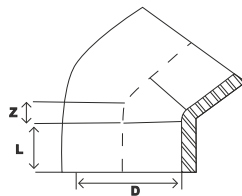
CODE	SIZE	D	L	Z	H
PPE C-0001	16MM	15.4	16	1.6	33.6
PPE C-0002	20 MM	19.2	14.5	3.9	32.9
PPE C-0003	25 MM	24.1	18.0	2.6	38.6
PPE C-0004	32 MM	31.0	18.4	3.0	39.8
PPE C-0005	40 MM	38.9	20.7	3.4	44.8
PPE C-0006	50 MM	48.0	24.4	3.1	51.9
PPE C-0007	63 MM	60.7	28.2	8.2	64.6
PPE C-0008	75 MM	71.9	31.5	4.0	67.0
PPE C-0009	90 MM	86.4	32.5	6.1	71.1
PPE C-0010	110 MM	106.8	38.8	3.0	80.6
PPE C-0011	125 MM	122.0	44.0	8.7	96.7
PPE C-0012	160 MM	153.0	42.5	5.4	90.4

ELBOW 90°



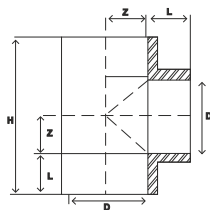
CODE	SIZE	D	L	Z	H
PPE E90-0013	16MM	15.5	14.4	8.5	34.3
PPE E90-0014	20 MM	19.1	15.5	10.9	40.0
PPE E90-0015	25 MM	24.2	16.9	14.1	47.4
PPE E90-0016	32 MM	31.1	18.0	16.4	54.2
PPE E90-0017	40 MM	39.5	20.0	20.0	66.2
PPE E90-0018	50 MM	48.4	23.8	26.2	80.3
PPE E90-0019	63 MM	60.5	27.4	32.2	98.2
PPE E90-0020	75 MM	72.6	31.5	38.0	115.4
PPE E90-0021	90 MM	86.8	33.0	44.7	130.6
PPE E90-0022	110 MM	106.	39.0	54.8	160.6
PPE E90-0023	125MM	123.6	43.0	71.0	150.0
PPE E90-0024	160 MM	153.6	45.0	78.7	220.8
PPE E90-0025	200MM
PPE E90-0026	250MM
PPE E90-0027	315MM
PPE E90-0028	355MM
PPE E90-0029	400MM

ELBOW 45°



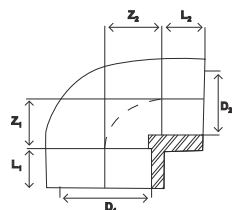
CODE	SIZE	D	L	Z
PPE E45-0030	20 MM	19.3	15.5	6.0
PPE E45-0031	25 MM	23.7	17.6	7.0
PPE E45-0032	32 MM	30.6	16.5	8.0
PPE E45-0033	40 MM	38.2	21.3	9.0
PPE E45-0034	50 MM	47.7	22.5	12.0
PPE E45-0035	63MM	60.0	26.0	13.0
PPE E45-0036	75 MM	72.5	26.7	20.0
PPE E45-0037	90 MM	86.8	34.5	32.0
PPE E45-0038	110 MM	106.2	35.3	40.0
PPE E45-0039	125 MM
PPE E45-0040	160 MM	154.9	48.2	50.0
PPE E45-0041	200 MM
PPE E45-0042	250 MM
PPE E45-0043	315MM
PPE E45-0044	355 MM
PPE E45-0045	400 MM

EQUAL TEE



CODE	SIZE	D	L	Z	H
PPE ET-0046	16MM	15.3	14.6	8.9	46.9
PPE ET-0047	20 MM	19.3	15.8	10.5	52.6
PPE ET-0048	25 MM	24.2	18.0	12.7	61.4
PPE ET-0049	32 MM	31.4	20.2	16.1	72.5
PPE ET-0050	40 MM	39.0	20.3	20.9	82.4
PPE ET-0051	50 MM	48.6	24.4	24.5	97.8
PPE ET-0052	63 MM	61.7	27.4	32.6	120.0
PPE ET-0053	75 MM	72.2	31.3	36.7	136.0
PPE ET-0054	90 MM	86.9	32.9	47.1	160.0
PPE ET-0055	110 MM	106.7	38.8	55.3	188.2
PPE ET-0056	125 MM	122.2	42.2	101.3	287.0
PPE ET-0057	160 MM	153.7	45.0	85.0	260.0
PPE ET-0058	200MM
PPE ET-0059	250MM
PPE ET-0060	315MM
PPE ET-0061	355MM
PPE ET-0062	400MM

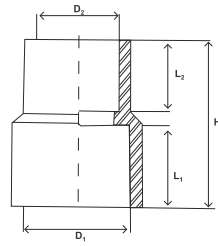
REDUCING ELBOW



CODE	SIZE	D1	D2	L1	L2	Z1	Z2
PPE RE-0403	25/20	24.0	19.2	18.5	16.0	17.8	14.4
PPE RE-0404	32/20	31.3	19.2	21.1	16.0	18.3	18.0
PPE RE-0405	32/25	31.3	24.2	20.0	17.8	22.2	20.7
PPE RE-0406	40/20	38.7	19.2	21.6	16.3	19.6	24.2
PPE RE-0407	40/25	38.7	24.2	21.6	17.8	21.4	20.7
PPE RE-0408	40/32	38.6	31.2	21.9	19.8	24.2	25.3



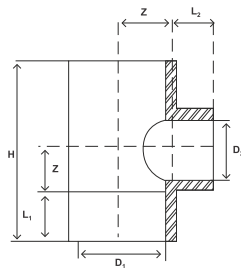
REDUCER



CODE	SIZE	D1	D2	L1	L2	H
PPE R-0063	25/20	24.0	19.2	18.5	15.7	38.1
PPE R-0064	32/20	31.3	19.2	20.0	15.7	39.3
PPE R-0065	32/25	31.4	24.4	21.0	18.4	41.7
PPE R-0066	40/20	38.7	19.3	22.9	16.9	48.0
PPE R-0067	40/25	39.0	24.2	24.2	18.0	48.5
PPE R-0068	40/32	38.6	31.0	21.1	18.8	44.9
PPE R-0069	50/20	48.0	18.8	24.6	16.6	44.5
PPE R-0070	50/25	48.0	23.8	24.5	16.2	45.6
PPE R-0071	50/32	48.0	31.1	24.4	18.0	48.1
PPE R-0072	50/40	48.2	38.8	24.3	20.9	48.2
PPE R-0073	63/20	60.9	19.2	28.2	15.9	48.3
PPE R-0074	63/25	60.7	24.1	28.2	18.0	49.5
PPE R-0075	63/32	60.6	30.7	28.0	18.0	48.0
PPE R-0076	63/40	60.8	38.3	25.3	25.5	56.8

CODE	SIZE	D1	D2	L1	L2	H
PPE R-0077	63/50	60.9	48.2	29.2	25.8	64.8
PPE R-0078	75/20	72.5	19.0	42.7	21.1	63.8
PPE R-0079	75/25	72.5	24.3	42.7	21.1	63.8
PPE R-0080	75/32	72.5	31.0	42.7	21.1	63.8
PPE R-0081	75/40	72.2	38.7	31.6	22.5	63.6
PPE R-0082	75/50	72.1	48.4	31.7	27.0	63.2
PPE R-0083	75/63	71.8	60.9	31.4	30.0	67.0
PPE R-0084	90/20	87.3	19.0	43.5	27.0	70.5
PPE R-0085	90/25	87.3	24.1	43.5	27.0	70.5
PPE R-0086	90/32	87.3	31.0	42.5	27.0	70.5
PPE R-0087	90/40	87.3	38.9	42.5	27.0	70.5
PPE R-0088	90/50	86.5	48.1	33.0	26.3	70.0
PPE R-0089	90/63	86.6	60.9	32.8	29.9	68.8
PPE R-0090	90/75	86.7	72.7	37.2	31.5	71.7
PPE R-0091	110/20	106.8	19.0	58.1	19.5	76.0
PPE R-0092	110/25	106.8	24.0	53.3	19.2	76.0
PPE R-0093	110/32	106.8	31.0	57.6	19.5	76.0
PPE R-0094	110/40	106.8	39.0	56.6	19.3	76.0
PPE R-0095	110/50	106.8	48.4	38.9	26.0	76.0
PPE R-0096	110/63	106.8	61.2	38.9	30.1	76.0
PPE R-0097	110/75	106.8	72.6	38.9	31.8	76.0
PPE R-0098	110/90	106.8	86.6	38.9	33.0	76.0
PPE R-0099	125/110	122.2	104.3	43.0	40.0	96.0
PPE R-0100	160/20	155.3	18.9	61.8	29.5	91.2
PPE R-0101	160/25	155.3	23.9	61.8	29.5	91.2
PPE R-0102	160/32	155.3	30.6	61.8	29.5	91.2
PPE R-0103	160/40	155.3	38.7	61.8	29.5	91.2
PPE R-0104	160/50	155.3	48.5	61.8	29.5	91.2
PPE R-0105	160/63	155.3	61.8	61.8	29.5	91.2
PPE R-0106	160/75	155.3	73.5	61.8	29.5	91.2
PPE R-0107	160/90	155.3	86.6	61.8	29.5	91.2
PPE R-0108	160/110	155.3	106.3	61.8	29.5	91.2
PPE R-0109	160/125	157.3	122.1	43.0	40.0	92.1

REDUCING TEE



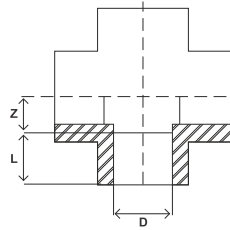
CODE	SIZE	D1	D2	L1	L2	Z	H
PPE RT-0110	25/20/25	24.2	19.1	17.6	16.2	10.8	56.8
PPE RT-0111	32/20/32	31.1	19.1	19.8	16.5	11.3	62.2
PPE RT-0112	32/25/32	31.4	24.2	20.0	17.8	13.4	66.8
PPE RT-0113	40/20/40	39.0	19.1	21.4	16.5	11.1	65.0
PPE RT-0114	40/25/40	38.8	24.2	21.4	17.6	13.5	69.8
PPE RT-0115	40/32/40	38.8	31.0	21.4	19.5	16.8	76.4
PPE RT-0116	50/20/50	48.4	19.1	24.4	18.1	24.5	97.7
PPE RT-0117	50/25/50	48.6	24.1	24.3	17.9	24.7	98.0
PPE RT-0118	50/32/50	48.6	30.5	24.3	18.8	24.6	97.8
PPE RT-0119	50/40/50	48.6	38.7	22.4	22.0	26.1	96.9
PPE RT-0120	63/20/63	61.2	19.0	27.5	16.2	32.2	119.4
PPE RT-0121	63/25/63	61.3	23.8	27.5	19.4	32.2	119.4
PPE RT-0122	63/32/63	61.3	30.8	27.5	19.3	32.2	119.4
PPE RT-0123	63/40/63	61.3	38.9	27.3	22.5	32.4	119.4
PPE RT-0124	63/50/63	61.2	48.0	27.4	25.8	32.3	119.4
PPE RT-0125	75/20/75	72.5	19.0	31.4	15.9	26.4	115.5
PPE RT-0126	75/25/75	72.5	24.0	31.4	17.6	26.4	115.5
PPE RT-0127	75/32/75	72.5	30.9	31.4	19.7	26.4	115.5
PPE RT-0128	75/40/75	72.3	38.4	31.4	20.3	26.4	115.5
PPE RT-0129	75/50/75	72.3	47.9	31.4	29.8	26.4	115.5

CODE	SIZE	D1	D2	L1	L2	Z	H
PPE RT-0130	75/63/75	72.2	60.2	31.4	29.8	26.4	115.5
PPE RT-0131	90/20/90	86.5	19.0	32.8	15.6	31.3	128.1
PPE RT-0132	90/25/90	86.5	24.0	32.8	17.6	31.3	128.1
PPE RT-0133	90/32/90	86.5	31.0	32.8	19.5	31.3	128.1
PPE RT-0134	90/40/90	86.5	38.6	32.8	21.2	31.3	128.1
PPE RT-0135	90/50/90	86.5	48.1	32.8	26.0	31.3	128.1
PPE RT-0136	90/63/90	86.5	61.2	32.8	30.1	31.3	128.1
PPE RT-0137	90/75/90	86.5	72.4	32.9	31.7	46.9	159.5
PPE RT-0138	110/20/110	106.5	19.0	38.7	15.8	38.5	154.3
PPE RT-0139	110/25/110	106.5	24.2	38.7	17.7	38.5	154.3
PPE RT-0140	110/32/110	106.5	31.0	38.7	19.7	38.5	154.3
PPE RT-0141	110/40/110	106.5	38.9	38.7	21.5	38.5	154.3
PPE RT-0142	110/50/110	106.5	48.6	38.9	26.2	38.3	154.3
PPE RT-0143	110/63/110	106.7	61.3	39.0	30.2	38.2	154.3
PPE RT-0144	110/75/110	106.4	72.5	39.0	32.0	38.2	154.3
PPE RT-0145	110/90/110	106.7	87.1	38.9	33.0	54.8	187.4
PPE RT-0146	125/110/125	122.5	107.5	44.0	44.0	64.0	216.0
PPE RT-0147	160/20/160	155.4	19.0	45.0	15.8	80.9	251.8
PPE RT-0148	160/25/160	155.4	23.8	45.0	18.5	80.9	251.8
PPE RT-0149	160/32/160	155.4	31.0	45.0	19.5	80.9	251.8
PPE RT-0150	160/40/160	155.4	38.9	45.0	21.5	80.9	251.8
PPE RT-0151	160/50/160	155.4	48.8	45.0	25.4	80.9	251.8
PPE RT-0152	160/63/160	157.5	61.9	45.0	27.6	80.9	251.8
PPE RT-0153	160/75/160	157.5	73.9	45.0	32.1	80.9	251.8
PPE RT-0154	160/90/160	157.5	88.5	45.0	33.0	80.9	251.8
PPE RT-0155	160/110/160	157.5	107.4	45.0	44.9	80.9	251.8
PPE RT-0156	200/90/200
PPE RT-0157	200/110/200
PPE RT-0158	200/125/200
PPE RT-0159	200/160/200
PPE RT-0160	250/90/250
PPE RT-0161	250/110/250
PPE RT-0162	250/125/250
PPE RT-0163	250/160/250
PPE RT-0164	250/200/250
PPE RT-0165	315/160/315
PPE RT-0166	315/200/315

PARTHIV PNEUMATIC PPRC PIPES

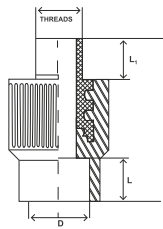


4WAY/CROSS TEE



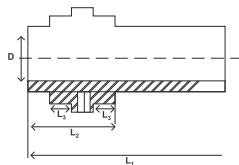
CODE	SIZE	D	L	Z
PPE CT-0236	20 MM	18.8	15.5	15.4
PPE CT-0237	25 MM	24.1	17.1	24.9
PPE CT-0238	32 MM	30.6	17.8	32.2
PPE CT-0239	40 MM	38.0	20.8	39.2
PPE CT-0240	50 MM	48.0	21.3	52.2
PPE CT-0241	63 MM	60.7	23.3	63.6

MALE THREADED COUPLING



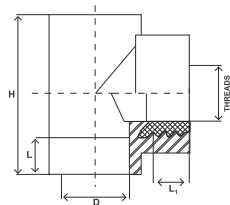
CODE	SIZE	THREADS	D	L	L1	H
PPE MTC-0279	16*1/2	1/2"	15.7	17.0	13.9	57.3
PPE MTC-0280	20*1/2	1/2"	19.2	16.2	14.2	57.0
PPE MTC-0281	25*1/2	1/2"	23.8	18.3	14.2	56.0
PPE MTC-0282	25*3/4	3/4"	24.1	18.2	14.1	59.1
PPE MTC-0283	32*1/2	1/2"	31.1	19.8	14.0	64.5
PPE MTC-0284	32*3/4	3/4"	31.1	20.3	14.2	67.8
PPE MTC-0285	32*1	1"	31.1	20.2	28.0	71.8
PPE MTC-0286	40*1	1"	38.7	21.6	28.0	76.0
PPE MTC-0287	40*1-1/4	1 1/4"	38.8	22.1	14.1	76.0
PPE MTC-0288	50*1-1/2	1 1/2"	48.9	25.5	21.3	80.0
PPE MTC-0289	63*2	2"	62.2	29.5	26.3	95.2
PPE MTC-0290	75*2-1/2	2 1/2"	72.0	32.4	24.9	100.5
PPE MTC-0291	90*3	3"	86.4	38.2	24.6	109.2
PPE MTC-0292	110*4	4"	104.9	38.1	25.5	119.0

TANK CONNECTOR



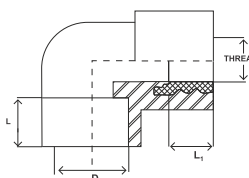
CODE	SIZE	D	L1	L2	L3
PPE TC-0252	20 MM	19.2	69.0	43.6	15.2
PPE TC-0253	25 MM	24.1	69.0	52.5	19.5
PPE TC-0254	32 MM	30.6	74.3	54.5	21.5
PPE TC-0255	40 MM	38.4	88.4	55.3	25.6
PPE TC-0256	50 MM	48.3	96.7	58.4	24.6
PPE TC-0257	63 MM	60.7	101.5	65.5	27.0

FEMALE THREADED TEE



CODE	SIZE	THREADS	D	L	L1	H
PPE FTT-0308	20*1/2	1/2"	19.2	15.0	14.0	58.2
PPE FTT-0309	25*1/2	1/2"	24.2	14.9	14.0	62.2
PPE FTT-0310	25*3/4	3/4"	24.2	16.2	13.9	63.8
PPE FTT-0311	32*1/2	1/2"	31.3	15.0	14.2	78.0
PPE FTT-0312	32*3/4	3/4"	31.3	16.2	14.2	78.2
PPE FTT-0313	32*1	1"	31.2	17.7	15.8	77.8
PPE FTT-0314	40*1-1/4	1 1/4"	39.0	17.6	15.2	91.0

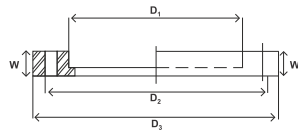
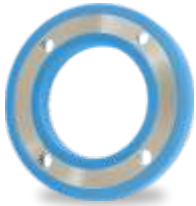
FEMALE THREADED ELBOW



CODE	SIZE	THREADS	D	L	L1
PPE FTE-0322	20*1/2	1/2"	19.2	16.1	16.0
PPE FTE-0323	25*1/2	1/2"	24.1	17.9	15.0
PPE FTE-0324	25*3/4	3/4"	24.2	17.9	16.0
PPE FTE-0325	32*1/2	1/2"	31.2	20.2	15.0
PPE FTE-0326	32*3/4	3/4"	31.2	20.2	16.1
PPE FTE-0327	32*1	1"	31.2	20.3	18.3
PPE FTE-0328	40*1-1/4	1 1/4"	39.1	21.3	17.9

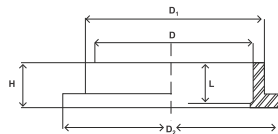


SLIP ON (PPRC STEEL INLAY FLANGE)



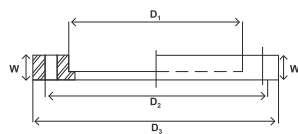
CODE	SIZE	PCD	MS Flange Wall Thickness	(PPR +MS) Wall Thickness	Flange OD.	Flange ID.	No of Hole	Bolt Dia
PPE SIF-0216	20 MM	73.0	4.8	16.9	113.4	32.0	4	12.7
PPE SIF-0217	25 MM	82.6	4.8	17.0	126.2	37.1	4	12.7
PPE SIF-0218	32 MM	87.6	6.4	16.7	136.0	44.4	4	12.7
PPE SIF-0219	40 MM	98.4	6.4	17.8	149.7	51.2	4	12.7
PPE SIF-0220	50 MM	114.3	7.9	20.7	170.8	63.2	4	15.9
PPE SIF-0221	63 MM	127.0	7.9	20.7	183.5	82.6	4	15.9
PPE SIF-0222	75 MM	146.1	9.5	21.6	204.9	98.3	4	15.9
PPE SIF-0223	90 MM	165.1	9.5	23.6	222.7	114.8	4	15.9
PPE SIF-0224	110 MM	177.8	9.5	25.6	235.6	136.9	4	15.9
PPE SIF-0225	125 MM	209.6	12.7	28.5	273.7	160.1	8	15.9
PPE SIF-0226	160 MM	260.4	12.7	25.0	345.0	196.0	8	15.9
PPE SIF-0227	200 MM	292.1	12.7	26.0	366.0	218.0	8	15.9
PPE SIF-0228	250 MM	355.6	19.1	27.8	430.0	272.0	8	15.9
PPE SIF-0229	315 MM	406.4	19.1	30.0	492.0	320.0	12	19.1

FLANGE CORE (STUB END)



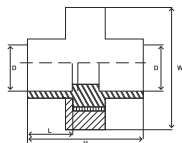
CODE	SIZE	D	D1	D2	L	H
PPE FC-0189	20 MM	19.2	29.9	44.6	20.7	24.2
PPE FC-0190	25 MM	24.1	33.9	49.7	20.0	24.0
PPE FC-0191	32 MM	31.1	42.9	50.5	19.9	23.3
PPE FC-0192	40 MM	31.1	49.6	60.2	20.3	25.8
PPE FC-0193	50 MM	48.1	62.6	72.3	22.2	27.2
PPE FC-0194	63 MM	61.0	80.7	95.0	20.9	35.4
PPE FC-0195	75 MM	72.6	95.0	111.3	31.9	39.0
PPE FC-0196	90 MM	87.1	111.8	129.4	24.2	42.1
PPE FC-0197	110 MM	106.8	133.3	151.0	25.4	43.3
PPE FC-0198	125 MM	123.8	157.6	179.8	43.4	68.0
PPE FC-0199	160 MM	155.0	194.4	214.0	31.0	52.8
PPE FC-0200	200MM	166.1	211.0	251.5	54.8	80.3
PPE FC-0201	250MM	213.8	261.4	312.0	80.5	84.4
PPE FC-0202	315MM	253.5	310.5	380.0	71.0	94.0
PPE FC-0203	355MM	300.0	355.0	427.0	63.8	119.0
PPE FC-0204	400MM	352.0	400.0	477.0	70.0	117.0

SLIP-ON (PPRC FLANGES)



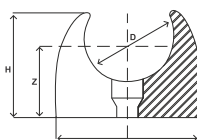
CODE	SIZE	D1	D2	D3	W
PPE F-0205	20 MM	31.5	67.6	112	17.7
PPE F-0206	25 MM	36.8	73.2	112	17.8
PPE F-0207	32 MM	43.6	97.0	115.7	20.6
PPE F-0208	40 MM	50.0	109.0	128.0	21.6
PPE F-0209	50 MM	62.5	122.0	140.7	22.5
PPE F-0210	63 MM	83.0	141.4	157.4	24.3
PPE F-0211	75 MM	97.0	175.3	172.3	26.2
PPE F-0212	90 MM	113.7	178.3	194.8	26.4
PPE F-0213	110 MM	135.7	197.9	216.0	30.6
PPE F-0214	125 MM	157.0	208.0	257.0	33.2
PPE F-0215	160 MM	195.8	266.0	292.0	35.5

PLAIN UNION



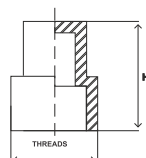
CODE	SIZE	D	L	W	H
PPE U-0230	20 MM	19.2	17.7	52.2	44.4
PPE U-0231	25 MM	24.2	18.6	51.4	55.2
PPE U-0232	32 MM	31.2	22.1	61.5	67.5
PPE U-0233	40 MM	39.2	29.2	79.0	79.9
PPE U-0234	50 MM	47.7	23.6	78.0	96.1
PPE U-0235	63 MM	60.7	27.7	89.0	107.6

PIPE CLAMP



CODE	SIZE	D	L	W	H
PPE PC-0242	16 MM	15.2	23.0	14.1	26.0
PPE PC-0243	20 MM	18.9	27.0	19.2	31.0
PPE PC-0244	25 MM	24.0	32.0	21.0	36.0
PPE PC-0245	32 MM	30.7	39.5	27.5	43.5
PPE PC-0246	40 MM	39.1	48.3	30.9	49.8
PPE PC-0247	50 MM	50.0	60.0	37.3	61.5
PPE PC-0248	63 MM	63.0	74.7	45.0	75.3

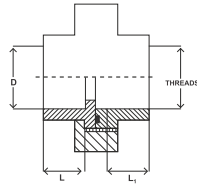
LONG PLUG



CODE	SIZE	THREADS	H
PPE LP-0249	1/2"	1/2"	69.7
PPE LP-0250	3/4"	3/4"	62.2
PPE LP-0251	1"	1"	73.6

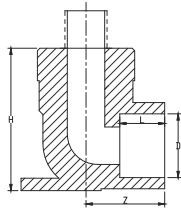


FEMALE THREADED UNION



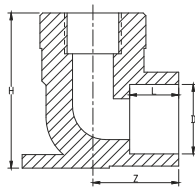
CODE	SIZE	THREADS	D	L	L1
PPE FTU-0351	20*1/2	1/2"	19.2	17.5	18.0
PPE FTU-0352	25*3/4	3/4"	24.2	19.0	18.5
PPE FTU-0353	32*1	1"	31.2	23.6	20.4
PPE FTU-0354	40*1-1/4	1 1/4"	39.2	28.4	23.0
PPE FTU-0355	50*1-1/2	1 1/2"	47.7	23.6	31.5
PPE FTU-0356	63*2	2"	60.6	28.4	28.7

MALE THREADED ELBOW WITH DISK



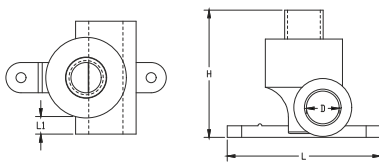
CODE	SIZE	THREADS	D	L	Z	T
PPE MTEWD -0419	20*1/2	1/2"	19.1	15.8	15.0	65
PPE MTEWD -0420	25*1/2	1/2"	24.0	17.6	16.2	70

FEMALE THREADED ELBOW WITH DISK



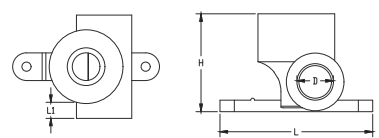
CODE	SIZE	THREADS	D	L	Z	T
PPE FTEWD -0421	20*1/2	1/2"	19.1	15.8	15.0	50
PPE FTEWD -0422	25*1/2	1/2"	24.0	17.6	16.2	55

MALE THREADED TEE WITH DISK



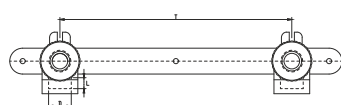
CODE	SIZE	THREADS	D	L	Z	T
PPE MTTWD -0423	20*1/2	1/2"	19.1	16.0	56.0	64
PPE MTTWD -0424	25*1/2	1/2"	24.0	17.2	57.7	70

FEMALE THREADED TEE WITH DISK



CODE	SIZE	THREADS	D	L	Z	T
PPE FTTWD -0425	20*1/2	1/2"	19.1	16.0	56.0	50
PPE FTTWD -0426	25*1/2	1/2"	24.0	17.2	57.8	56

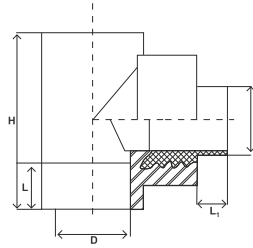
DOUBLE FEMALE ELBOW WITH DISK



CODE	SIZE	THREADS	D	L	Z	T
PPE DFEWD -0417	20*1/2	1/2"	18.7	15.8	16.0	149.5
PPE DFEWD -0418	25*1/2	1/2"	24.0	17.6	16.2	149.5

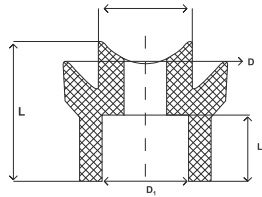


MALE THREADED TEE



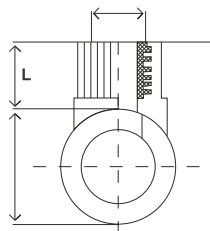
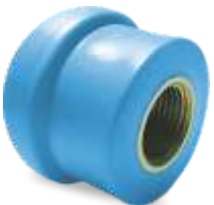
CODE	SIZE	THREADS	D	L	L1	H
PPE MTT-0315	20*1/2	1/2"	19.2	15.0	14.0	58.2
PPE MTT-0316	25*1/2	1/2"	24.2	14.9	14.0	62.2
PPE MTT-0317	25*3/4	3/4"	24.2	16.2	13.9	63.8
PPE MTT-0318	32*1/2	1/2"	31.3	15.0	14.2	78.0
PPE MTT-0319	32*3/4	3/4"	31.3	16.2	14.2	78.2
PPE MTT-0320	32*1	1"	31.2	17.7	15.8	77.8
PPE MTT-0321	40*1-1/4	1 1/4"	39.0	17.6	15.2	91.0

WELD IN SADDLE REDUCER

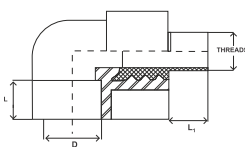


CODE	SIZE	D	D1	L	L1
PPE WIS R-0377	63/32	48.8	30.8	40.2	19.9
PPE WIS R-0378	75/32	48.8	30.8	40.2	19.9
PPE WIS R-0379	90/20	78.5	19.1	62.1	15.5
PPE WIS R-0380	90/25	78.5	24.2	62.1	17.5
PPE WIS R-0381	90/32	78.5	31.0	62.1	19.1
PPE WIS R-0382	90/40	79.2	38.9	62.1	21.4
PPE WIS R-0383	90/50	79.2	48.8	62.1	21.7

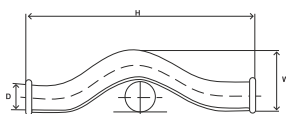
WELD IN SADDLE FEMALE THREADED COUPLING



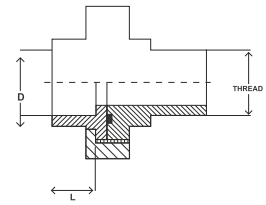
MALE THREADED ELBOW



BY PASS BEND



MALE THREADED UNION



CODE	SIZE	THREADS	D	L
PPE MTU-0345	20*1/2	1/2"	19.2	17.8
PPE MTU-0346	25*3/4	3/4"	24.2	19.0
PPE MTU-0347	32*1	1"	31.3	23.5
PPE MTU-0348	40*1-1/4	1 1/4"	39.2	28.5
PPE MTU-0349	50*1-1/2	1 1/2"	47.6	24.6
PPE MTU-0350	63*2	2"	60.6	28.1

CODE	SIZE	D	D1	L	L1
PPE WIS R-0384	90/63	79.2	62.7	62.1	27.5
PPE WIS R-0385	110/20	88.0	19.0	66.7	15.5
PPE WIS R-0386	110/25	88.0	24.0	66.7	17.3
PPE WIS R-0387	110/32	88.0	31.0	66.7	19.3
PPE WIS R-0388	110/40	88.0	39.1	66.7	21.5
PPE WIS R-0389	110/50	88.0	48.8	66.7	25.2
PPE WIS R-0390	110/63	88.0	62.4	66.7	27.4
PPE WIS R-0391	160/20	89.8	19.0	62.0	15.6
PPE WIS R-0392	160/25	89.8	23.9	62.0	17.3
PPE WIS R-0393	160/32	89.8	31.2	62.0	19.4
PPE WIS R-0394	160/40	89.8	38.8	62.0	21.3
PPE WIS R-0395	160/50	89.8	49.1	62.0	21.5
PPE WIS R-0396	160/63	89.8	62.5	62.0	27.3
PPE WIS R-0397	200/20	90.2	19.1	66.0	15.6
PPE WIS R-0398	200/25	90.2	24.1	66.0	17.7
PPE WIS R-0399	200/32	90.2	31.2	66.0	19.4
PPE WIS R-0400	200/40	90.2	39.0	66.0	21.4
PPE WIS R-0401	200/50	90.2	48.8	66.0	25.0
PPE WIS R-0402	200/63	90.2	62.5	66.0	27.3

CODE	SIZE	D	D1	L	L1
PPE WIS M-0367	160*1/2	1/2"	16.3	49.2	41.3
PPE WIS M-0368	110*1/2	1/2"	16.3	49.2	41.3
PPE WIS M-0369	90*1/2	1/2"	16.3	49.2	41.3
PPE WIS M-0370	75*1/2	1/2"	16.3	49.2	41.3
PPE WIS M-0371	63*1/2	1/2"	16.3	49.2	41.3
PPE WIS M-0372	160*3/4	3/4"	16.0	49.1	41.3
PPE WIS M-0373	110*3/4	3/4"	16.0	49.1	41.3
PPE WIS M-0374	90*3/4	3/4"	16.0	49.1	41.3
PPE WIS M-0375	75*3/4	3/4"	16.0	49.1	41.3
PPE WIS M-0376	63*3/4	3/4"	16.0	49.1	41.3

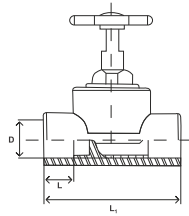
CODE	SIZE	THREADS	D	L	L1
PPE MTE-0329	20*1/2	1/2"	19.2	16.1	15.0
PPE MTE-0330	25*1/2	1/2"	24.1	17.9	15.0
PPE MTE-0331	25*3/4	3/4"	24.2	18.0	14.2
PPE MTE-0332	32*1/2	1/2"	31.3	21.0	14.3
PPE MTE-0333	32*3/4	3/4"	31.3	20.4	15.2
PPE MTE-0334	32*1	1"	31.3	20.1	27.0
PPE MTE-0335	40*1-1/4	1 1/4"	39.0	24.5	21.8

CODE	SIZE	D	W	H
PPE BPB-0363	20 MM	19.3	40	86
PPE BPB-0364	25 MM	23.9	47.0	94.9
PPE BPB-0365	32 MM	31.2	58.0	106.0
PPE BPB-0366	40 MM	37.9	80.0	133.0

PARTHIV PNEUMATIC PPRC PIPES

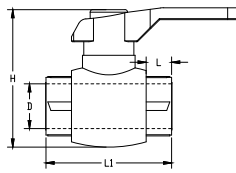


GATE VALVE



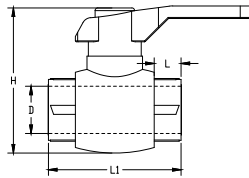
CODE	SIZE	D	L	L1
PPE GV-0336	20 MM	19.0	15.0	60.5
PPE GV-0337	25 MM	24.0	16.8	69.2
PPE GV-0338	32 MM	31.1	20.0	79.5
PPE GV-0339	40 MM	39.0	21.4	92.5
PPE GV-0340	50 MM	48.0	24.0	112.2
PPE GV-0341	63 MM	60.6	26.0	119.1
PPE GV-0342	75 MM	72.3	30.8	133.4
PPE GV-0343	90 MM	86.0	30.8	178.0
PPE GV-0344	110 MM	106.0	41.6	200.0

BALL VALVE PLASTIC (FOR COLD WATER)



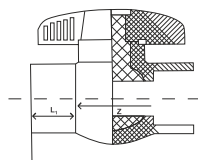
CODE	SIZE	D	L1	L	H
PPE PBV-0262	50 MM	48.8	125.0	33.0	122.0
PPE PBV-0263	63 MM	62.1	147.0	38.0	138.0

BRASS BALL VALVE (FOR HOT WATER)



CODE	SIZE	D1	D2	L	Z	H
PPE BBV-0264	20 MM	18.90	19.35	20.90	26.50	70.55
PPE BBV-0265	25 MM	23.80	24.25	20.50	33.15	76.90
PPE BBV-0266	32 MM	30.80	31.10	24.00	37.65	86.70
PPE BBV-0267	40 MM	38.80	38.98	21.38	60.89	98.35
PPE BBV-0268	50 MM	48.90	49.10	22.80	68.20	122.25
PPE BBV-0269	63 MM	61.68	61.85	26.25	78.00	133.25

BALL VALVE PLASTIC (FOR COLD WATER)



CODE	SIZE	D1	D2	L	Z	H
PPE PBV-0258	20 MM	19.10	19.35	16.15	41.35	64.25
PPE PBV-0259	25 MM	23.80	24.30	18.00	41.20	72.70
PPE PBV-0260	32 MM	30.85	31.20	19.90	46.90	82.65
PPE PBV-0261	40 MM	38.25	38.95	25.38	52.44	97.25

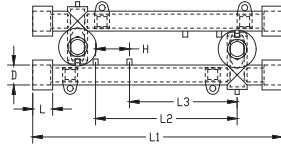
FLANGE END BALL VALVE



CODE	SIZE	Flange Ball Valve Bore ID (mm)	Ball Valve Flange OD (mm)	Flange Ball Valve No. of Hole	Ball Valve Flange Hole PCD (mm)	Ball Valve Flange Hole Length/Wid th (mm)	Flange Ball Valve Height (mm)
PPE FEBV-0270	20 MM	18.5	100.0	4.0	71.0	16.5/15.0	142.8
PPE FEBV-0271	25 MM	24.1	122.0	4.0	84.8	18.8/13.8	158
PPE FEBV-0272	32 MM
PPE FEBV-0273	40 MM	37.55	138.00	4.00	101.56	22.10/15.90	101.55
PPE FEBV-0274	50 MM	49.67	167.40	4.00	116.05	24.60/17.80	116.10
PPE FEBV-0275	63 MM
PPE FEBV-0276	75MM	63.65	180.10	4.00	128.42	31.70/18.55	128.40
PPE FEBV-0277	90 MM	72.90	198.45	4.00	152.75	26.75/18.08	152.70
PPE FEBV-0278	110 MM	98.40	221.37	8.00	181.20	23.68/18.42	181.20

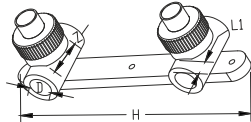


DOUBLE BATTERY TAP CONNECTOR



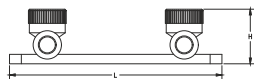
CODE	SIZE	THREADS	D	L	L1	L2	H
PPE DBTC F-0409	20*1/2	1/2"	19.1	17.3	248	101	30
PPE DBTC F-0410	25*1/2	1/2"	24.0	18.5	248	101	30

DOUBLE MALE THREADED TEE WITH DISK



CODE	SIZE	THREADS	D	L1	Z	H
PPE DMTWD -0411	20*1/2	1/2"	19.1	16.0	25.3	150
PPE DMTWD -0412	25*1/2	1/2"	24.0	18.0	25.2	150

DOUBLE FEMALE THREADED TEE WITH DISK



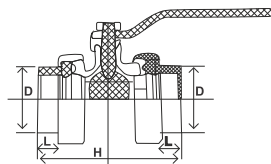
CODE	SIZE	THREADS	D	L1	Z	H
PPE DMTWD -0413	20*1/2	1/2"	19.1	16.0	25.3	150
PPE DMTWD -0414	25*1/2	1/2"	24.0	18.0	25.2	150

DOUBLE MALE ELBOW WITH DISK



CODE	SIZE	THREADS	D	L	Z	T
PPE DMEWD -0415	20*1/2	1/2"	18.7	15.8	16.0	149.5
PPE DMEWD -0416	25*1/2	1/2"	24.0	17.6	16.2	149.5

DOUBLE UNION BALL VALVE



CODE	SIZE	D	L	H
PPE DUBV-0357	20 MM	18.7	16.3	84.1
PPE DUBV-0358	25 MM	23.8	17.4	95.7
PPE DUBV-0359	32 MM	30.8	21.8	107.3
PPE DUBV-0360	40 MM	38.9	25.2	125.3
PPE DUBV-0361	50 MM	48.7	27.3	147.0
PPE DUBV-0362	63 MM	61.4	29.0	168.5

CONCEALED VALVE



CODE	SIZE	D	L	L1
PPE CV-0427	20 MM	19.0	15.0	60.5
PPE CV-0428	25 MM	24.3	17.2	68.1
PPE CV-0429	32 MM	31.0	20.0	79.7



Parthiv

Poly-Extrusions Pvt. Ltd.

We mean Corrosion-free

ISO 9001:2015 CERTIFIED

Survey No.: 238, Near Deep Ind. Park,
Odhav-Indore Highway,
Village : Kubadthal-Lalpur Road, Ta.: Daskroi,
Dist. : Ahmedabad-382 430. (Gujarat) INDIA

Mobile : +91 98985 84101
E-mail : info@parthivpoly.com
Visit us: www.parthivpoly.com

